

# MEMORANDUM

**noise.co.uk** Ltd  
The Haybarn  
Newnham Grounds  
Kings Newnham Lane  
Bretford  
CV23 0JU

19<sup>th</sup> July 2022

Taylor Wimpey (North Thames)  
Building 2 Imperial Place  
Maxwell Road  
Borehamwood WD6 1JN

## RE: Noise barrier Todds Green, Stevenage

### Query

The client, Taylor Wimpey (North Thames) have received comments regarding reflected sound from a barrier on the boundary with a recent development.

A 3D noise model has been created to predict the impact of the barrier on existing receivers.

### Modelling and Analysis

The noise model described in noise.co.uk Ltd report 17977B-1-R3 has been used to predict the increase in sound pressure level at existing receivers due to reflections from the new barrier.

The figures below show the two situations (without the barrier and with the barrier) for the daytime period, that have been modelled along with a difference map showing the predicted increase in sound pressure levels at the existing residential receivers.

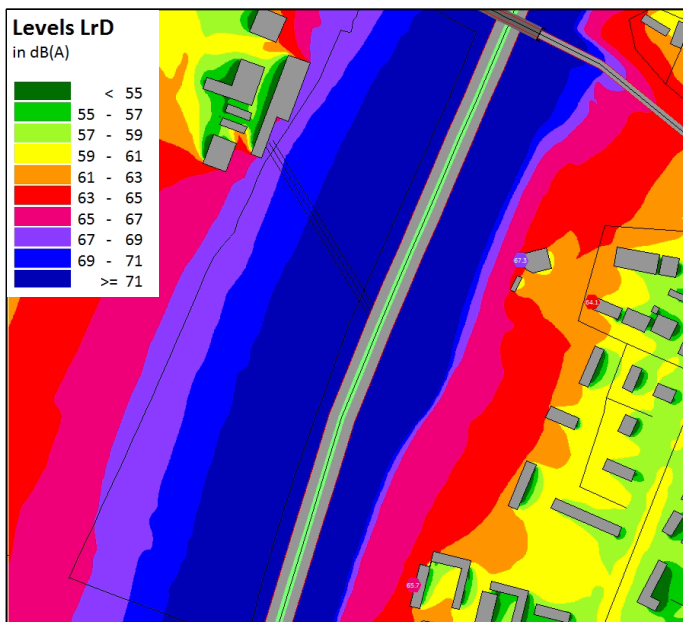


Figure 1 - Situation 1 : Existing site without barrier or development

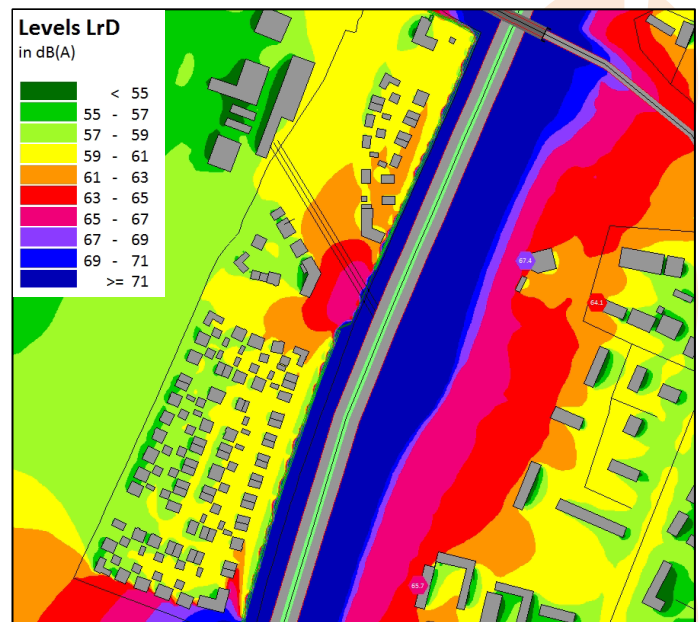


Figure 2 - Situation 2: Site with boundary barrier and development

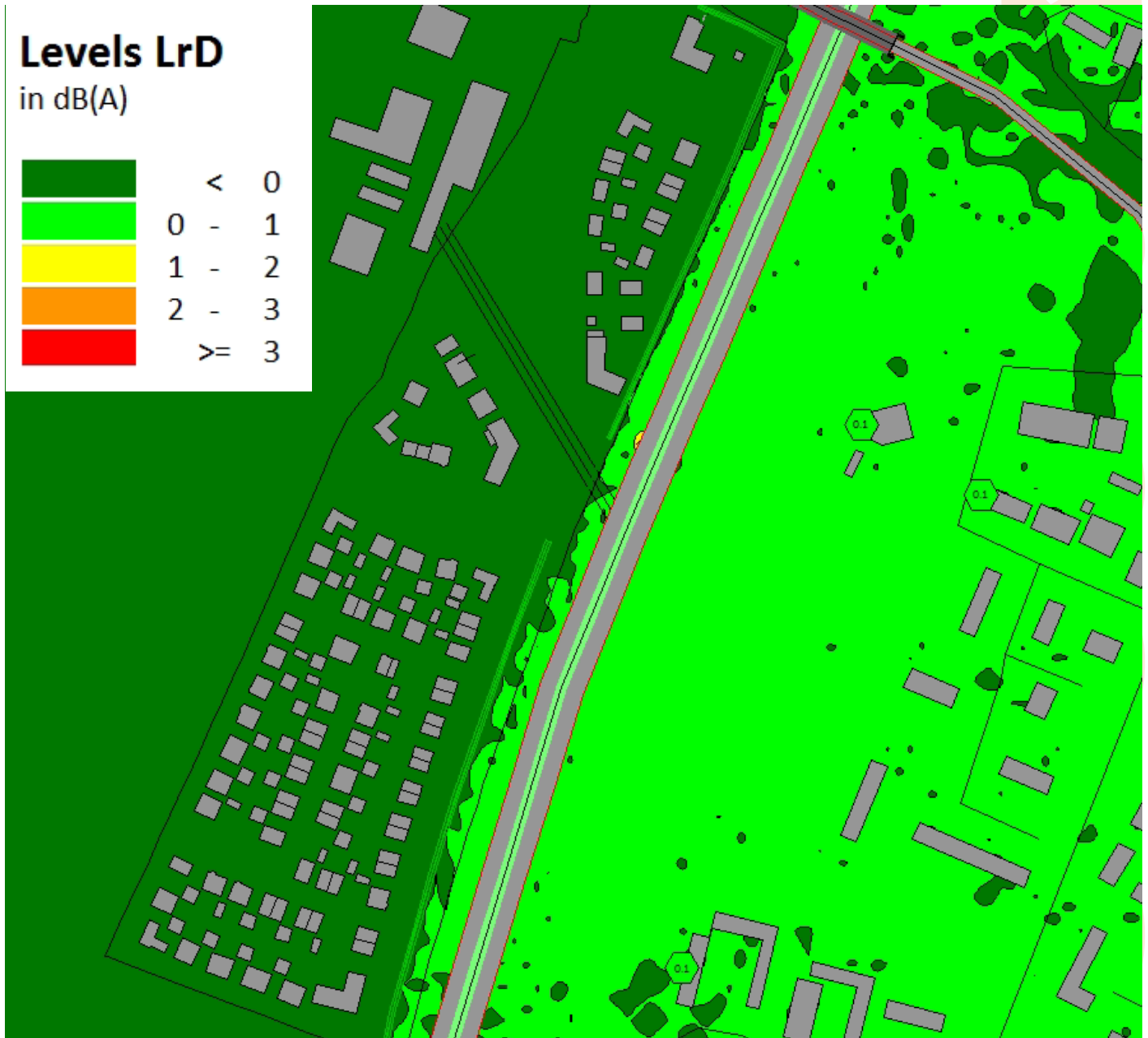


Figure 3 - Difference map showing predicted effect of fence and development on existing receivers

The models above indicate that the inclusion of the barrier and development are not predicted to have a noticeable effect on the existing receivers (~0.1dB). For reference, the minimum change in sound pressure level that the majority of people can perceive is 3dB.

**Jonathan Seiffert** BSc, AMIOA

Junior Acoustic Consultant