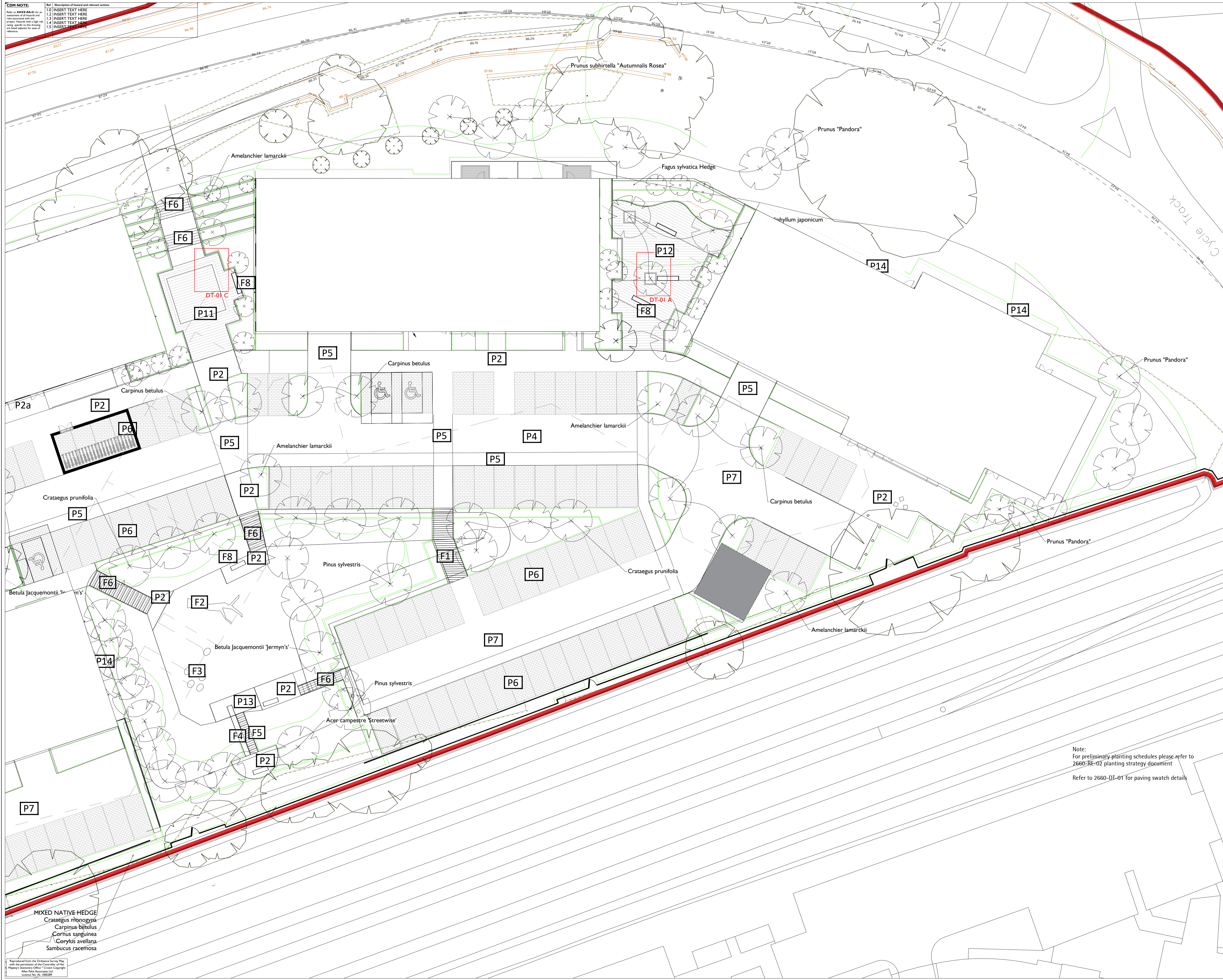


CDM NOTE	Ref	Description of hazard and relevant action
1.0	1.0	INSERT TEXT HERE
1.1	1.1	INSERT TEXT HERE
1.2	1.2	INSERT TEXT HERE
1.3	1.3	INSERT TEXT HERE
1.4	1.4	INSERT TEXT HERE
1.5	1.5	INSERT TEXT HERE



APAL FILE REFERENCE
2660-LA-01

Notes
This drawing is subject to copyright.
Do not scale from this drawing.

Based on drawing by
Drawing number

LEGEND

- Soft Landscape**
- Existing tree
 - Proposed deciduous tree
 - Proposed shrub planting
 - Proposed Hedge planting
- Hard Landscape**
- P1 Blacktop
 - P2 Pre-cast concrete 'Yorkstone textured' paving flags 600x300mm. Colour: Light Grey
 - P2a Pre-cast concrete 'Yorkstone textured' paving flags, 600x300mm Colour: Dark Grey
 - P3 Concrete block paving in two tones, Colours: Dark Grey and Light Grey Bond: herringbone
 - P4 Concrete, tumbled block paving, 140mm gauge random length (210-140-105); Bond: coursed, perpendicular to travel; Colour: Dark Grey
 - P5 Concrete, tumbled block paving, 140mm gauge random length (210-140-105); Bond: coursed, perpendicular to travel; Colour: Light Grey
 - P6 Concrete block paving (permeable), laid coursed, aligned to direction of travel. Sizes 140 gauge x 105, 140 and 210 random lengths; Colour Brindle. Bays separated by single course of contrasting toned blocks. Size: 140x210mm. Colour: Dark Grey
 - P7 Concrete block paving, 140 gauge, random length mm; Bond: Herringbone / coursed; Colour: Light Grey
 - P8 Outer areas; Double band of Pre-cast concrete 'Yorkstone textured' flags 600x300mm; Colour: Light Grey; alternating with a single band in concrete blocks, 200x100mm; Colour: Dark Grey; Laid: coursed
 - P9 Feature squares to be double bands of 140mm gauge, random length concrete blocks, in alternating bands of dark grey and light grey
 - P10 Bands in double rows of Pre-cast concrete 'Yorkstone textured' flags; Colour: Light Grey 600x300mm; The rest of the terrace to be 600x300mm 'Yorkstone textured slab'; Colour: Charcoal
 - P11 600x300mm 'Yorkstone textured' flags; Colour: Natural with bands every 3 rows in 140 gauge, random length concrete blocks; Misty grey; Framing bands to be in 600x300mm flags; Colour: Graphite; Finish textured
 - P12 Rows of 600x300mm 'Yorkstone' effect flags in stretcher bond alternating with 140 gauge, random length bands of concrete blocks; Colour: Misty grey blocks laid header bond
 - P13 Rubber safety grass play surfacing to supplier's specification
 - P14 Gravel edge with 50mm pc concrete edging
- Furniture**
- F1 Metal framed bridge with railings
 - F2 Robinia play trunk
 - F3 Glacial rounded play boulders
 - F4 Stainless steel topographic slide
 - F5 Timber step riser and self bound gravel tread with metal railings
 - F6 Concrete step riser and tread unit, colour: silver grey. With metal railings
 - F7 Circular bench seat
 - F8 Metal and timber seat units

Rev	Description	Date	Drawn	Checked
C	Sub stations included and planting amended	09/03/22	SS	VF
B	Block 1 layout amended	28/05/21	SS	VF
A	Planting amended	07/07/20	SS	VF

Note:
For preliminary planting schedules please refer to 2660:RE-02 planting strategy document
Refer to 2660-DI-01 for paving swatch details

PRELIMINARY

Allen Pyke Associates
Landscape architecture Urban design Environmental planning

69A Lensfield Road
Cambridge
CB2 1EN

T 01223 358055 F 01223 370040
www.allenpyke.co.uk
KINGSTON UPON THAMES • CAMBRIDGE

A registered practice of the Landscape Institute

Client
Hill Partnership Ltd. Scale
1/500@A1

Project
Land West of Lytton Way Steavenage By/Chk
SS/VF

Drawing Title
Landscape General Arrangement Layout Date
22/06/20

Drawing Number
2660-LA-02 Revision
C

Reproduced from the Ordnance Survey Map with the permission of the Controller of Her Majesty's Stationery Office. Crown Copyright. Allen Pyke Associates Ltd. Licence No. AL 1000389