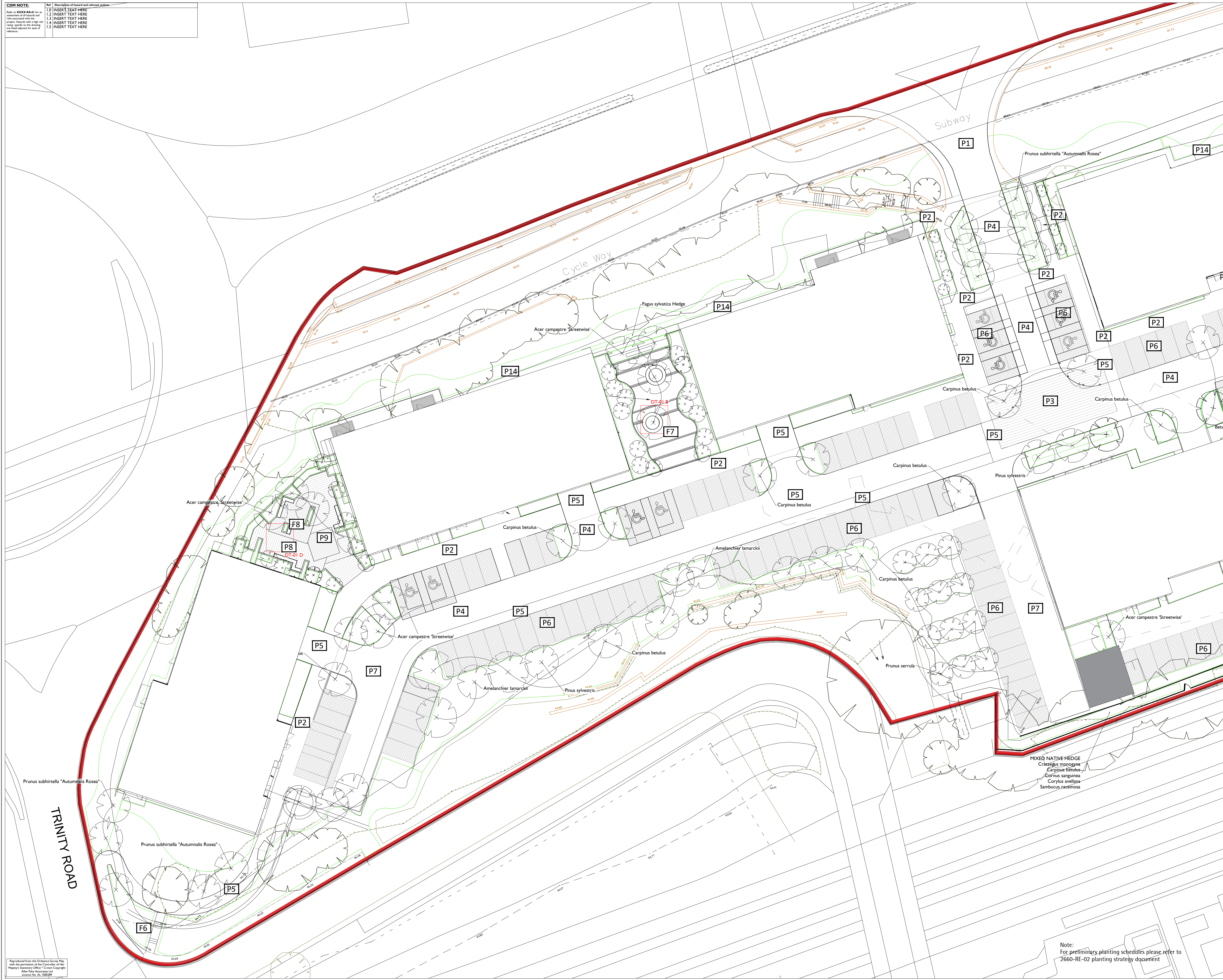


CDM NOTE	Ref	Description of hazard and relevant action
Refer to XXXX-001 for a list of all hazards and risks associated with this project. Risks with high or very high ratings specific to this drawing will be addressed by one of the following:	1.0	INSERT TEXT HERE
	1.1	INSERT TEXT HERE
	1.2	INSERT TEXT HERE
	1.3	INSERT TEXT HERE
	1.4	INSERT TEXT HERE
	1.5	INSERT TEXT HERE



APAL FILE REFERENCE  
2660-LA-01

Notes  
This drawing is subject to copyright. Do not scale from this drawing.

Based on drawing by  
Drawing number

LEGEND

Soft Landscape

- Existing tree
- Proposed deciduous tree
- Proposed shrub planting
- Proposed Hedge planting

Hard Landscape

- P1 Blacktop
- P2 Pre-cast concrete "Yorkstone textured" paving flags 600x300mm. Colour: Light Grey
- P2a Pre-cast concrete "Yorkstone textured" paving flags, 600x300 Colour: Dark Grey
- P3 Concrete block paving in two tones, Colours: Dark Grey and Light Grey Bond: herringbone
- P4 Concrete, tumbled block paving, 140mm gauge random length (210-140-105); Bond: coursed, perpendicular to travel; Colour: Dark Grey
- P5 Concrete, tumbled block paving, 140mm gauge random length (210-140-105); Bond: coursed, perpendicular to travel; Colour: Light Grey
- P6 Concrete block paving (permeable), laid coursed, aligned to direction of travel. Sizes 140 gauge x 105, 140 and 210 random lengths; Colour Brindle. Bays separated by single course of contrasting toned blocks. Size: 140x210mm. Colour: Dark Grey
- P7 Concrete block paving, 140 gauge, random length mm; Bond: Herringbone / coursed; Colour: Light Grey
- P8 Outer areas: Double band of Pre-cast concrete "Yorkstone textured" flags 600x300mm; Colour: Light Grey; alternating with a single band in concrete blocks, 200x100mm; Colour: Dark Grey; laid: coursed
- P9 Feature squares to be double bands of 140mm gauge, random length concrete blocks, in alternating bands of dark grey and light grey
- P10 Bands in double rows of Pre-cast concrete "Yorkstone textured" flags; Colour: Light Grey 600x300mm; The rest of the terrace to be 600x300mm "Yorkstone textured slab"; Colour: Charcoal
- P11 600x300mm "Yorkstone textured" flags; Colour: Natural with bands every 3 rows in 140 gauge, random length concrete blocks; Misty grey; Framing bands to be in 600x300mm flags; Colour: Graphite; Finish textured
- P12 Rows of 600x300mm "Yorkstone" effect flags in stretcher bond alternating with 140 gauge, random length bands of concrete blocks; Colour: Misty-grey blocks laid header bond
- P13 Rubber safety grass play surfacing to supplier's specification
- P14 Gravel edge with 50mm pc concrete edging

F1 Metal framed bridge with railings

F2 Robinia play trunk

F3 Glacial rounded play boulders

F4 Stainless steel topographic slide

F5 Timber step riser and self bound gravel tread with metal railings

F6 Concrete step riser and tread unit, colour: silver grey. With metal railings

F7 Circular bench seat

F8 Metal and timber seat units

Rev	Description	Date	Drawn	Checked
C	Sub stations included and planting amended	09/03/22	SS	VF
B	Block 1 layout amended	28/05/21	SS	VF
A	Planting amended	07/07/20	SS	VF

Drawing Status  
**PRELIMINARY**

**Allen Pyke Associates**  
Landscape architecture Urban design Environmental planning

69A Lensfield Road  
Cambridge  
CB2 1EN

T 01223 358055 F 01223 370040  
www.allenpyke.co.uk  
KINGSTON UPON THAMES • CAMBRIDGE

A registered practice of the Landscape Institute

Client  
**Hill Partnership Ltd.** Scale  
1/500@A1

Project  
**Land West of Lytton Way  
Stevenage** By/Chk  
SS/VF

Drawing Title  
**Landscape General Arrangement  
Layout** Date  
22/06/20

Drawing Number  
**2660-LA-01** Revision  
C

Reproduced from the Ordnance Survey Map with the permission of the Controller of Her Majesty's Stationery Office. Crown Copyright. Allen Pyke Associates Ltd. Licence No. AL 1000289

Note:  
For preliminary planting schedules please refer to 2660-RE-02 planting strategy document