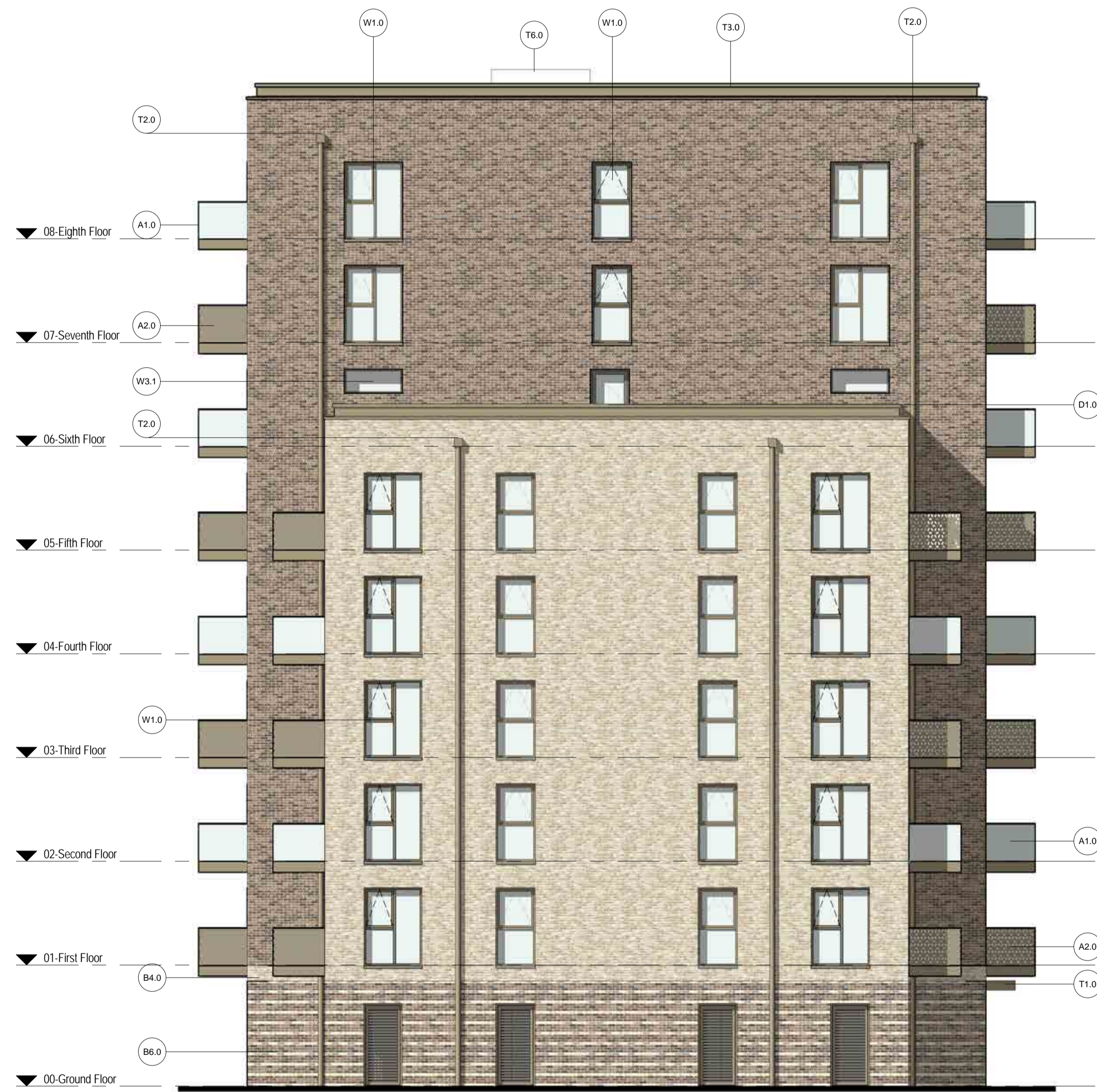




**Block 7 - Elevation 03**  
1 : 100



**Block 7 - Elevation 04**  
1 : 100

**MATERIAL KEY**

**BALCONIES**  
A1.0 Balcony - Champagne perforated panel to front and clear glass to sides  
A1.1 Ground floor amenity boundary - Champagne perforated panel to front and clear glass to sides  
A2.0 Balcony - Clear glass to front and Champagne perforated panel to sides

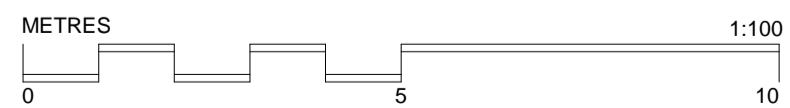
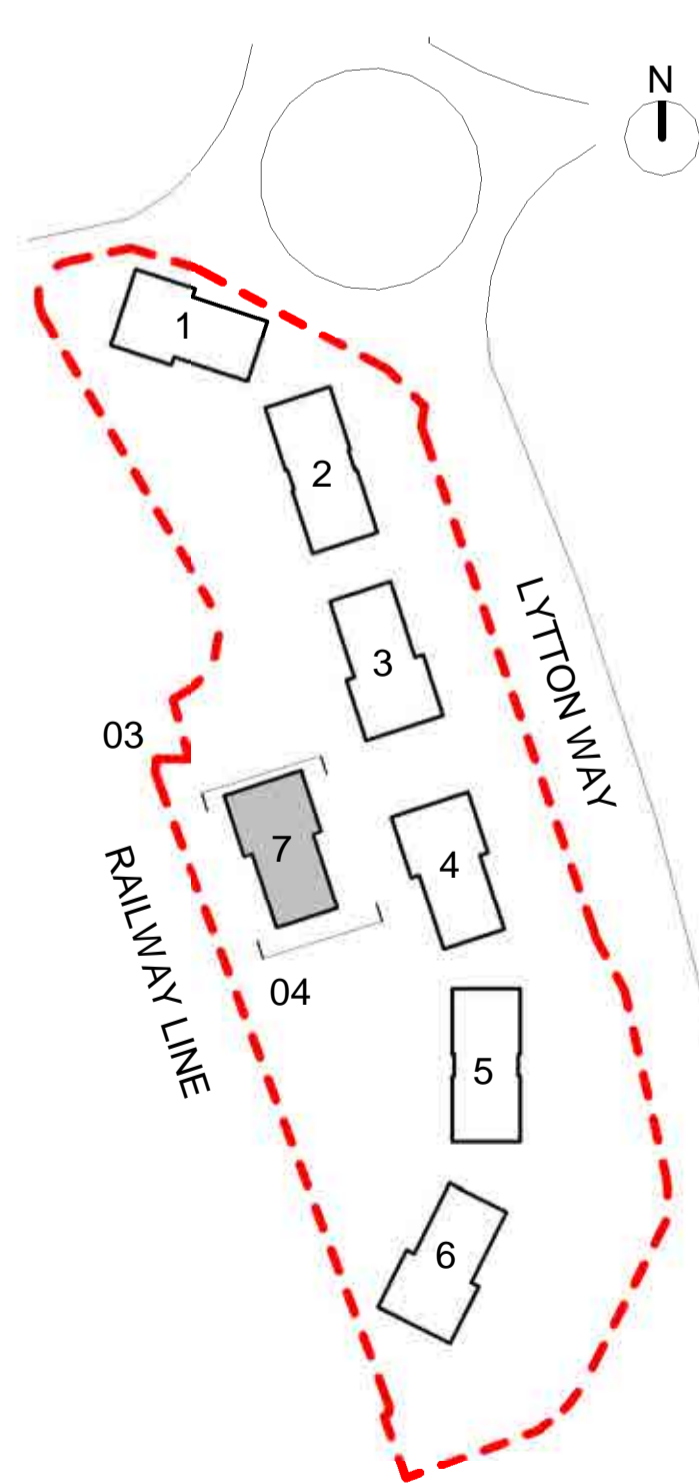
**BRICKS**  
B1.0 Light grey brick - Stretcher course  
B2.0 Mid grey brick - Stretcher bond  
B3.0 Striped brick coursing -3 courses mid grey : 1 course light grey  
B3.1 Striped brick coursing -3 courses light grey : 1 course mid grey  
B4.0 Buff brick - Stretcher course  
B5.0 Red/brown multi brick - Stretcher course  
B6.0 Striped brick coursing -3 courses brown/red multi : 1 course buff  
B6.1 Striped brick coursing -3 courses buff : 1 course brown/red multi

Note: Engineering bricks proposed above damp proof course (approx. up to 300mm) on all external brickwork walls. Colours to match brickwork above.

**EXTERNAL DOORS**  
D1.0 Metal frame glazed door - Champagne  
D1.1 Metal frame glazed door - Dark Grey  
D2.0 Metal louvre door - Champagne  
D2.1 Metal louvre door - Dark Grey  
D3.1 Metal frame door - Dark Grey  
D4.0 Doors/Windows to non-residential - Dark Grey

**SUNDRIES**  
T1.0 Canopy - Folded Metal - Champagne  
T1.1 Canopy - Folded Metal - Dark Grey  
T2.0 RWP/Hoppers - Champagne  
T2.1 RWP/Hoppers - Dark Grey  
T3.0 Profiled Metal Coping - Champagne  
T3.1 Profiled Metal Coping - Dark Grey  
T4.0 Ventilation Louvres - Champagne  
T4.1 Ventilation Louvres - Dark Grey  
T5.0 Entry control system  
T6.0 Lift Overrun

**WINDOWS**  
W1.0 Window Standard Unit - Champagne  
W1.1 Window Standard Unit - Dark Grey  
W2.0 Window with Openable Door - Champagne  
W2.1 Window with Openable Door - Dark Grey  
W3.1 High Level Window Standard Unit - Dark Grey



Notes:

--

Revisions:

Rev	Date	Drawn	Chkd

Revisions:

Rev	Date	Drawn	Chkd

Revisions:

Rev	Date	Drawn	Chkd
C01	30.07.2019	MM	RK

**PLANNING ISSUE**

Date: JULY '19	Client: Hill
Drawn: DAJ	Project: Site West of Lytton Way
Check: RK	Title: Block 7 - Elevations 3 & 4
Scale: 1:100 @A1	Drawn: 16-019 D 753
	Revision: C01



40 Norman Road,  
Greenwich, London  
SE10 9QX

t. 020 8293 5175  
bptw.co.uk

