

THE FRIENDS OF THE FORSTER COUNTRY



'To preserve for all time the open green space north of Stevenage known as the Forster Country'

PLANNING REPORT - HOUSING NUMBERS APPENDIX A – POPULATION NUMBERS

DOCUMENT NUMBER FoFC 2016 PL / HO / 001 Appendix A

ASSESSMENT OF POPULATION NUMBERS

00	14/12/2016	J.C. Spiers 				For Issue

THE FRIENDS OF THE FORSTER COUNTRY



To preserve for all time the open green space north of Stevenage known as the Forster Country'

PLANNING REPORT - HOUSING NUMBERS APPENDIX A – POPULATION NUMBERS

DOCUMENT NUMBER FoFC 2016 PL / HO / 001 Appendix A

REV	DATE	BY	CHKD	APPRD	MODIFICATIONS	STATUS
-----	------	----	------	-------	---------------	--------

REVISION STATUS INDEX

SUMMARY OF CHANGES	SECTION NUMBER	REVISIONS					
		1	2	3	4	5	6

THE FRIENDS OF THE FORSTER COUNTRY



To preserve for all time the open green space north of Stevenage known as the Forster Country'

PLANNING REPORT - HOUSING NUMBERS APPENDIX A – POPULATION NUMBERS

DOCUMENT NUMBER FoFC 2016 PL / HO / 001 Appendix A

--	--	--	--	--	--	--	--	--

THE FRIENDS OF THE FORSTER COUNTRY



To preserve for all time the open green space north of Stevenage known as the Forster Country'

PLANNING REPORT - HOUSING NUMBERS **APPENDIX A – POPULATION NUMBERS**

DOCUMENT NUMBER FoFC 2016 PL / HO / 001 Appendix A

CONTENTS

1.0 THIS DOCUMENT

1.1 Associated Report

2.0 NUMBER COMPARISON

2.1 Use of figures presented in the SHMA and HTP

2.2 Population Projections based on extrapolation of census data

2.3 Population Projections based on extrapolation of electoral role

2.4 Population Projections based on extrapolation of constituency numbers

2.5 Conclusion on Population Projections

THE FRIENDS OF THE FORSTER COUNTRY



To preserve for all time the open green space north of Stevenage known as the Forster Country'

PLANNING REPORT - HOUSING NUMBERS APPENDIX A – POPULATION NUMBERS

DOCUMENT NUMBER FoFC 2016 PL / HO / 001 Appendix A

1.0 THIS DOCUMENT

1.1 Associated Report

This document forms an appendix to Report Number FoFC 2016 PL / HO / 001

2.0 NUMBER COMPARISON

2.1 Use of figures presented in the SHMA and HTP

The SHMA says the following on Page 15 :-

The SHMA has therefore developed population projections using migration trends based on the 10-year intercensal period (2001-2011) which relies on Census data instead of mid-year estimates.

The SHMA on page 16 indicates in the published graphs 3 possible population numbers for the year 2031 based on past trends as follows :-

- Linear census 92,500
- 10 year migration 95,300
- 2012 based SNPP 97,900

The 2011 census gave the population of Stevenage as 83,957.

This would lead to 3 possible population growths :-

- Linear census 8,543
- 10 year migration 11,343
- 2012 based SNPP 13,943

The reasoned derivations of the 10 year migration projection and the 2012 based SNPP projection do not seem clear. Further the projection based on linear census is merely an extrapolation based on a questionable premise. The numbers given in figure 9 on page 16 of the SHMA do not appear to have any stated basis. If these are Office of National Statistics projections then the basis of these projections should have been made clear to readers of the SHMA and in turn the Local Plan. This report suggests that proper evidence has not been presented in the SHMA.

THE FRIENDS OF THE FORSTER COUNTRY



To preserve for all time the open green space north of Stevenage known as the Forster Country'

PLANNING REPORT - HOUSING NUMBERS APPENDIX A – POPULATION NUMBERS

DOCUMENT NUMBER FoFC 2016 PL / HO / 001 Appendix A

2.2 Population Projections based on extrapolation of census data

This section (3.2) is written to provide a comparison with the SHMA figures.

The census numbers below have been taken from reputable websites.

The census number for 2001 was **79,720**

The census number for 2011 was **83,957**

Growth percentage 2001 to 2011 = **5.315%** (10 year period)

Assuming linear growth as indicated in the SHMA :-

20 year growth from 2011 to 2031 = 10.63%

This yields **92,882**

This compares with the figure of **92,500** in the SHMA graph on page 16

and at 0.4% discrepancy is within a reasonable measurement tolerance of the SHMA graph.

2.3 Population Projections based on extrapolation of electoral role

This section (2.3) is written to provide a comparison with the SHMA figures.

The number of people on the electoral roll for Stevenage has been obtained for the years 1983, 1984, 1986, 1987, 1988, 1990, 1991, 1992, 1994, 1995, 1996, 1998, 1999, 2000, 2002, 2003, 2004, 2006, 2007, 2008, 2010, 2011, 2012 and 2015.

The electoral roll for 2000 was 59,141 and for 2002 was 59,352 and interpolation suggests that the figure for 2001 would be

59,247

The electoral roll for 2011 was **61,706**

Electoral roll growth from 2001 to 2011 :-

4.15%

THE FRIENDS OF THE FORSTER COUNTRY

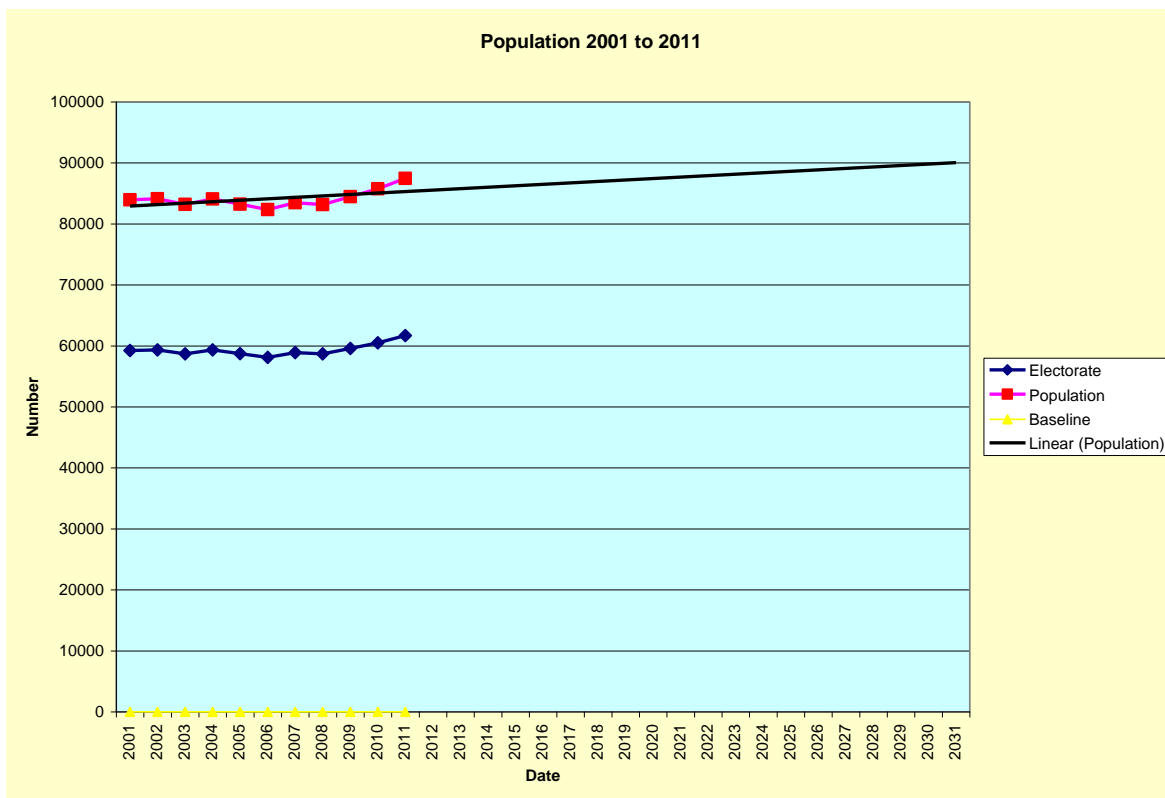


To preserve for all time the open green space north of Stevenage known as the Forster Country'

PLANNING REPORT - HOUSING NUMBERS APPENDIX A – POPULATION NUMBERS

DOCUMENT NUMBER FoFC 2016 PL / HO / 001 Appendix A

This percentage increase is lower than that for the population as a whole and if used would lead to a lower forward projection (SBC premise). However, as this represents a lower percentage increase in the electorate it implies either a lower percentage registering or a higher young person ratio. Although the two percentage increases are of the same order of magnitude it is suggested that use of census data is more reliable. An extrapolated graph of electorate / population growth from 2001 to 2011 is given below. The population growth follows the electorate pattern and is based on a fixed ratio of population to electorate. The trend is reduced because of the dip around 2005.



The above graph is based on the false premise that future population growth will inevitably be an extrapolation of past growth but is shown to give a direct comparison with the figures used in the SBC Local Plan. It indicates a 2031 population at about **90,000**. It could be regarded as a more realistic trend than that indicated in the SHMA.

THE FRIENDS OF THE FORSTER COUNTRY



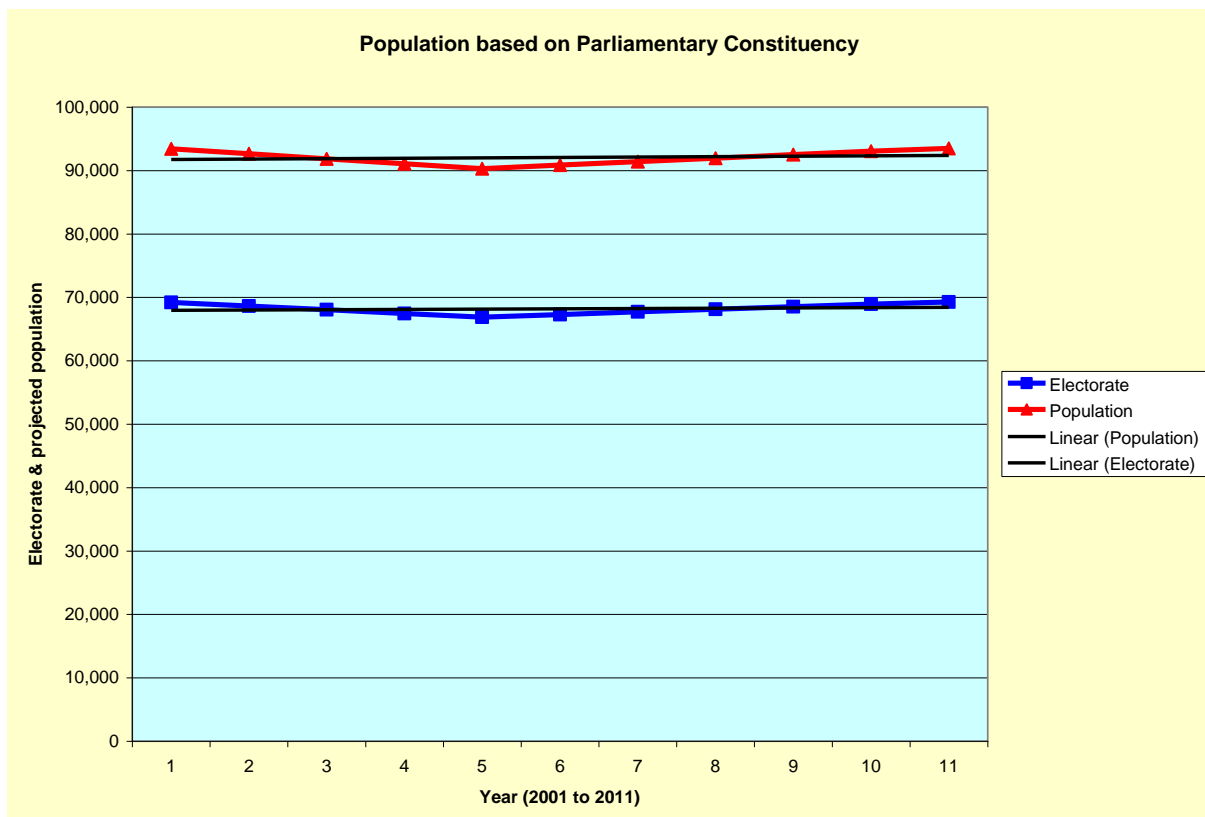
To preserve for all time the open green space north of Stevenage known as the Forster Country'

PLANNING REPORT - HOUSING NUMBERS APPENDIX A – POPULATION NUMBERS

DOCUMENT NUMBER FoFC 2016 PL / HO / 001 Appendix A

2.4 Population Projections based on extrapolation of constituency numbers

For completeness a review of constituency numbers based on electoral role was undertaken. However, this may be regarded as unrealistic as it includes around 6 or so villages to the south of the borough of Stevenage. A graph based on this review is given below.



Constituency numbers remain roughly the same over the 10 year period. These numbers are dependent upon the actual constituency boundary which changes and the total number of constituencies in the UK which tends to rise with time.

2.5 Conclusion on Population Projections

This Appendix concludes that the maximum likely growth in the population of Stevenage between 2011 and 2031 adopting the linear extrapolation method which is in itself questionable is 92,882 - 83,957 = **8,925**. Examination of the actual requirements of Stevenage people alone in terms of

THE FRIENDS OF THE FORSTER COUNTRY



To preserve for all time the open green space north of Stevenage known as the Forster Country'

PLANNING REPORT - HOUSING NUMBERS APPENDIX A – POPULATION NUMBERS

DOCUMENT NUMBER FoFC 2016 PL / HO / 001 Appendix A

natural growth and reduction of any overcrowding has not been attempted in the Local Plan nor here. Building **7,600** homes for this increase in population is not reasonable.