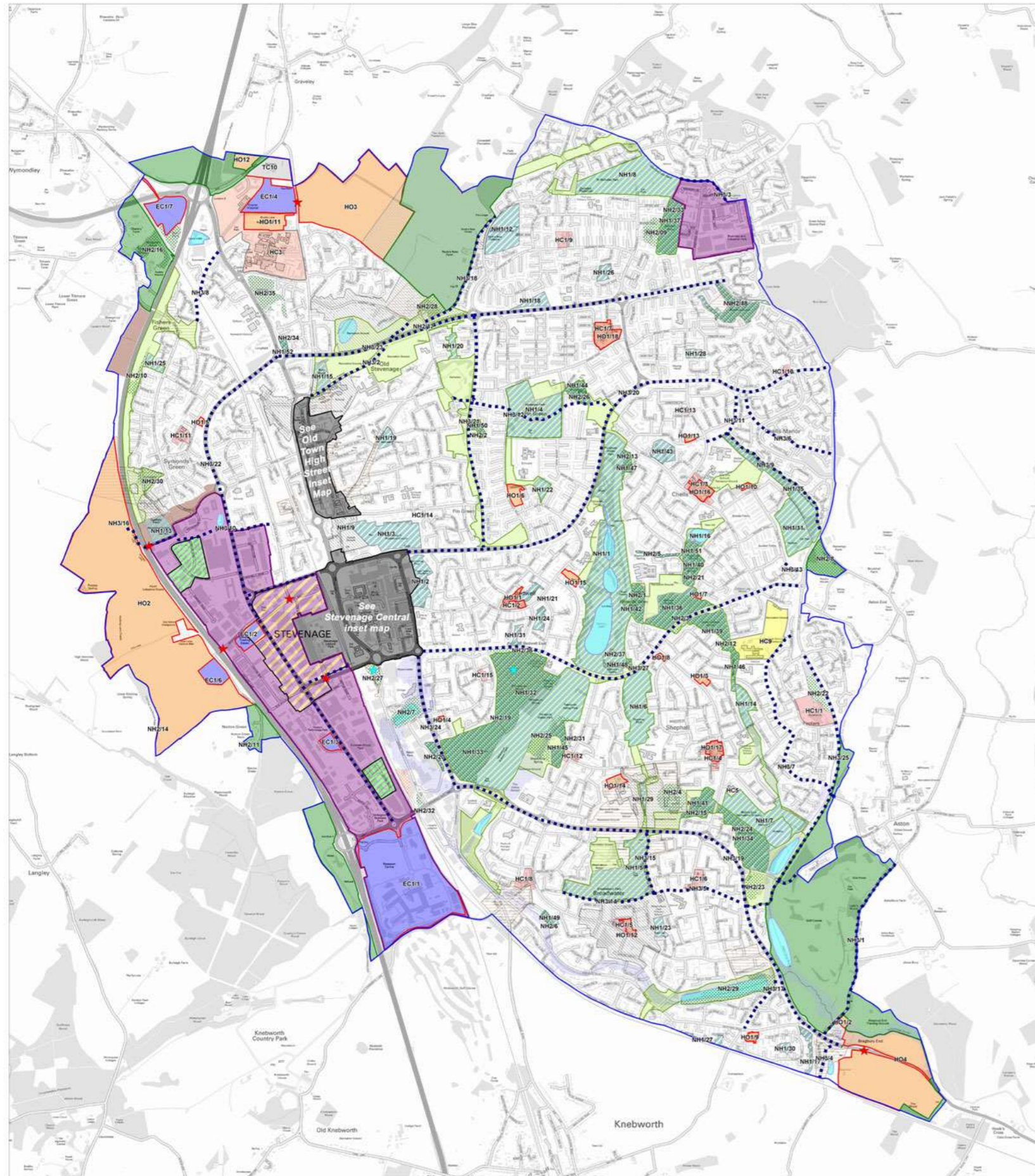


Local Plan Proposals Map



Stevenage Borough Local Plan 2011-2031 Draft Proposals Map

- Chapter 6: A strong, competitive economy**
 - EC1: Allocated sites for employment development
 - EC2: Gunnels Wood Employment Area
 - EC2: Gunnels Wood Edge-of-Centre Zone
 - EC3: Gunnels Wood Industrial Zones
 - EC6: Pin Green Employment Area
- Chapter 7: A vital town centre**
 - TC11: Convenience retail
- Chapter 8: Infrastructure and transport**
 - IT1: Strategic development access points
 - IT2: West of Stevenage safeguarded corridors
- Chapter 9: High quality homes**
 - HO1: Housing allocations
 - HO2: Stevenage West
 - HO3: North of Stevenage
 - HO4: South east of Stevenage
 - HO12: Gypsy and traveller provision
- Other relevant designations**
 - Conservation Areas
 - Flood risk areas (Strategic Flood Risk Assessment)
 - Langley sidings rail depot (Minerals Local Plan)
 - Scheduled Ancient Monuments
- Chapter 11: Healthy communities**
 - HC1: District, local and neighbourhood centres
 - HC3: Health campus
 - HC5: New health, social and community facilities
 - HC9: Former Barnwell East secondary school site
- Chapter 12: The Green Belt**
 - GB1: Green Belt
- Chapter 13: Climate change, flooding and pollution**
 - FP2: Flood Storage Reservoirs
- Chapter 14: The natural and historic environments**
 - NH1: Principal Open Spaces
 - NH2: Wildlife sites
 - NH3: Green corridors
 - NH4: Green links
 - NH9: Archaeological Alert Areas

Scale: 1:10,000 (1cm = 100m) at A0

This map is based upon Ordnance Survey material with the permission of Ordnance Survey on behalf of the Controller of Her Majesty's Stationery Office (c) Crown copyright. Unauthorised reproduction infringes Crown Copyright and may lead to prosecution or civil proceedings. Stevenage Borough Council 100024285 2015

Note: These boundaries are not set by the local plan. The boundaries are as existing at the time of publication but may be subject to separate review outside of the local plan process