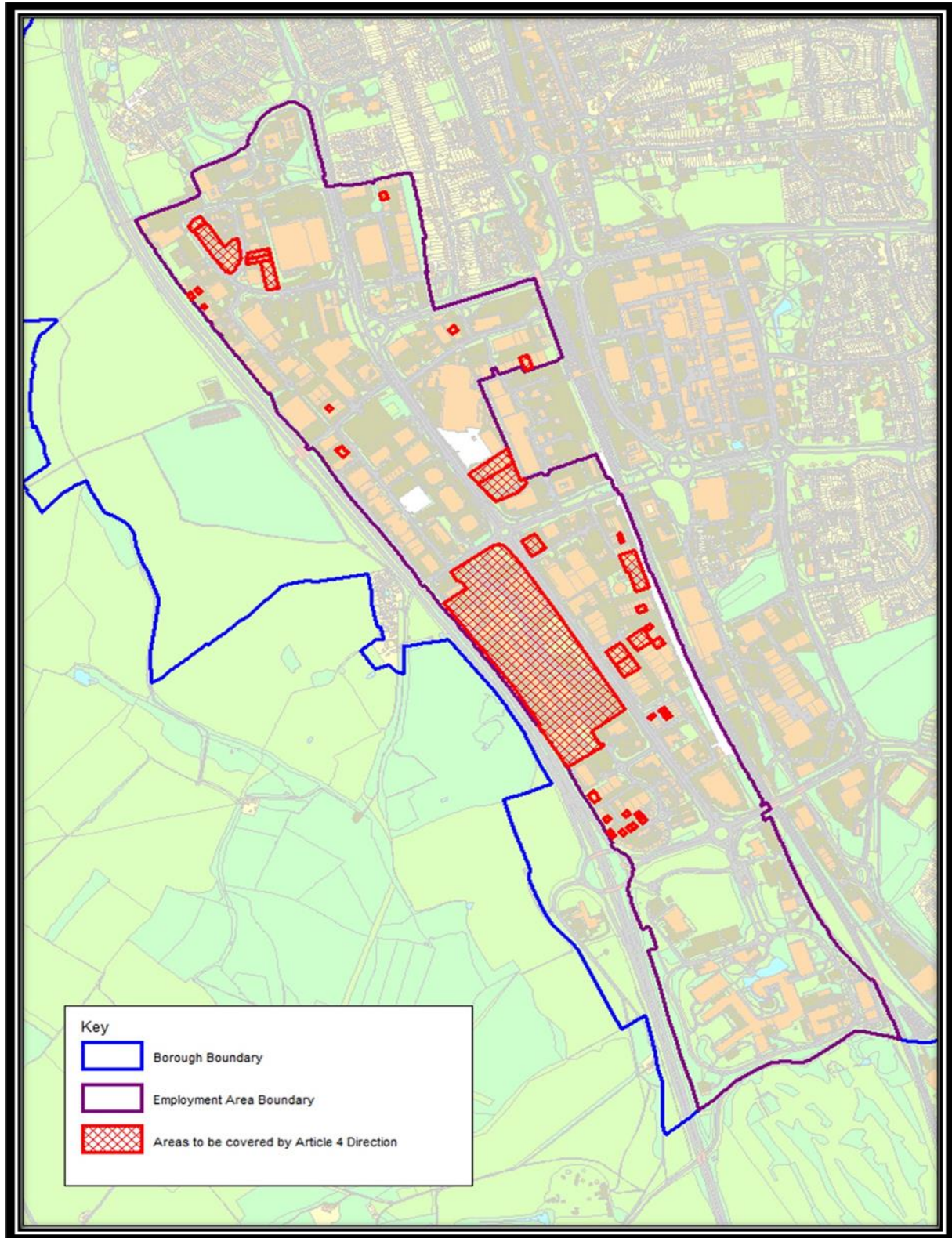


Areas covered by the Article 4 Direction

Change of use from Class E(g)(iii) light industrial to Class C3 (dwellinghouses) for those areas in Gunnels Wood Employment Area to be covered by the Direction



Areas covered by the Article 4 Direction

Change of use from Class E(g)(iii) light industrial to Class C3 (dwellinghouses) for those areas in Pin Green Employment Area to be covered by the Direction

