

**Town and Country Planning (General Permitted Development) Order 1995**

**Town and Country Planning (General Permitted Development) (Amendment)  
(England) Order 2015**

**Notice of confirmation of Article 4 (1) Direction relating to planning controls  
over E(g)(iii) light industrial to C3 (dwellinghouses) for those areas currently  
exempt**

Notice is hereby given that Stevenage Borough Council ("the Borough Council") has confirmed a Direction made on 22 January 2025 under Article 4(1) of the Town and Country Planning (General Permitted Development) Order 2015, as amended, under the power conferred on them by Article 3 of the said Order. Representations concerning the Article 4 Direction were invited between 22 January 2025 and 18 February 2025. Representations received during this period have been taken into account by the Borough Council.

The Directions relate to development comprising the change of use of a building from a use falling within Class E(g)(iii) light industrial to a use falling within Class C3 (dwelling house) and removes permitted development rights under Class MA – commercial, business and service uses, Part 3 to Schedule 2 of the General Permitted Development Order for this type of development from the date when the Direction comes into force.

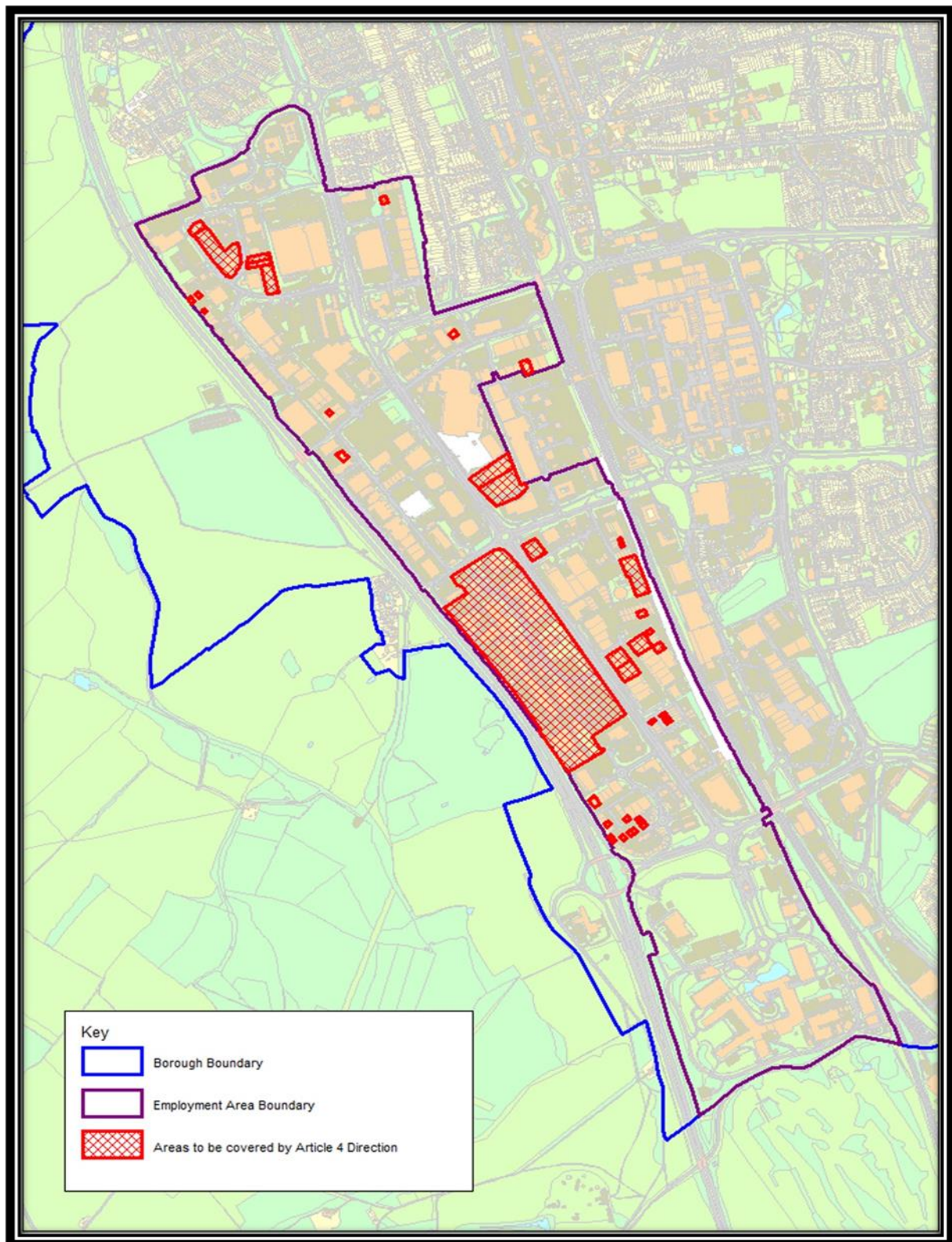
The Article 4 Direction will come into force on 21 January 2026.

A copy of the Direction, including a map defining the area covered, can be viewed at Stevenage Borough Council Offices in Danestrete, Stevenage Central Library at Southgate and the Old Town Library at 38 High Street or on the Council's website at [www.stevenage.gov.uk/](http://www.stevenage.gov.uk/).

Tom Pike  
Chief Executive

Dated 21 January 2026

**Confirmation of Direction: Change of use from Class E(g)(iii) light industrial to Class C3 (dwellinghouses) for those areas currently exempt in Gunnels Wood Employment Area**





**Confirmation of Direction: Change of use from Class E(g)(iii) light industrial to Class C3 (dwellinghouses) for those areas currently exempt in Pin Green Employment Area**

