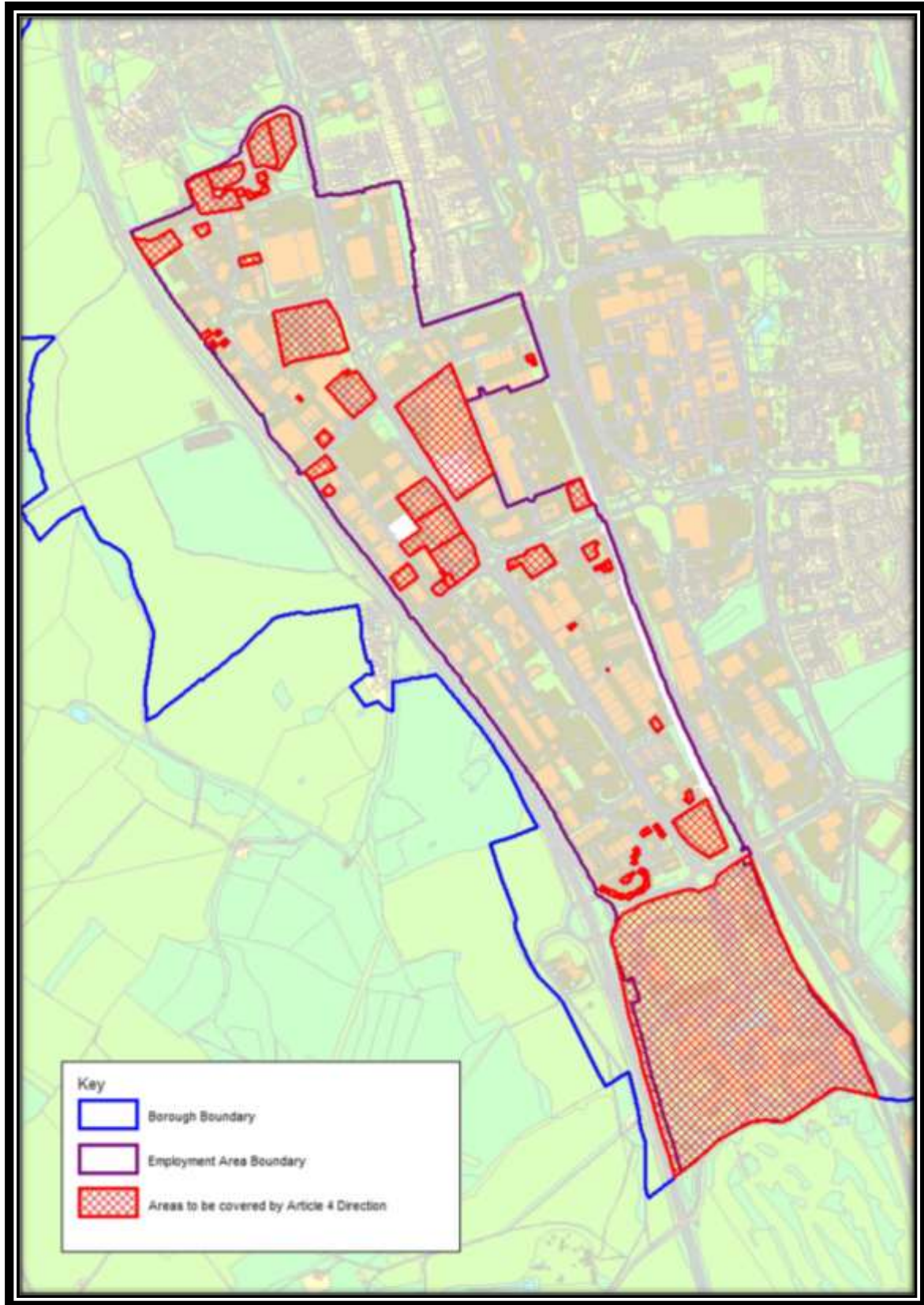


Article 4 Directions – List of Consultation Sites

Gunnels Wood Employment Area - E(g)(i) Offices

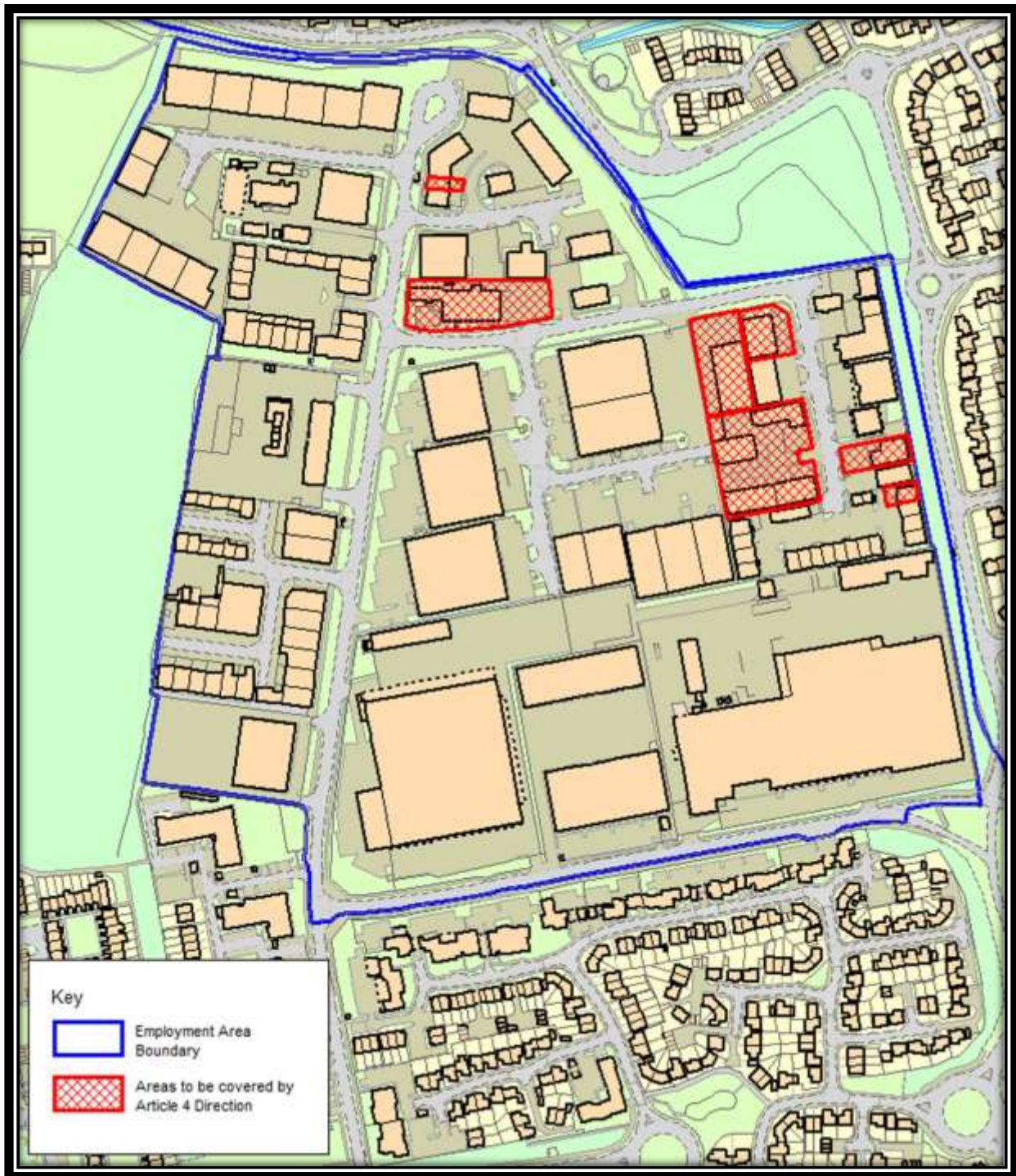


| Address | Use Class |
|--|-----------------|
| Cagex House, Leyden Road, Stevenage SG1 2BP | E(g)(i) Offices |
| MDBA Site, Gunnels Wood Road, Stevenage, SG1 2DA | E(g)(i) Offices |
| Robertson House, Gunnels Wood Road, Stevenage SG1 2FQ | E(g)(i) Offices |
| Farnham House, Gunnels Wood Road, Stevenage SG1 2FQ | E(g)(i) Offices |
| Abel Smith House, Gunnels Wood Road, Stevenage SG1 2FQ | E(g)(i) Offices |
| Airbus Site, Gunnels Wood Road, Stevenage, SG1 2AS | E(g)(i) Offices |
| Unit 4, Access Business Park, Gunnels Wood Road, Stevenage SG1 2GR | E(g)(i) Offices |
| Park Managers Office, Gunnels Wood Park, Gunnels Wood Road, Stevenage SG1 2BH | E(g)(i) Offices |
| Redemption House Gunnels Wood Park, Gunnels Wood Road, Stevenage SG1 2TA | E(g)(i) Offices |
| Glaxo SmithKline Site, Gunnels Wood Road, Stevenage SG1 2BH | E(g)(i) Offices |
| Unit 1, Gateway 1000, Arlington Business Park, Whittle Way, Stevenage SG1 2FP | E(g)(i) Offices |
| Unit 2, Gateway 1000, Arlington Business Park, Whittle Way, Stevenage SG1 2FP | E(g)(i) Offices |
| Unit 3, Gateway 1000, Arlington Business Park, Whittle Way, Stevenage SG1 2FP | E(g)(i) Offices |
| Unit 4, Gateway 1000, Arlington Business Park, Whittle Way, Stevenage SG1 2FP | E(g)(i) Offices |
| Unit 5, Gateway 1000, Arlington Business Park, Whittle Way, Stevenage SG1 2FP | E(g)(i) Offices |
| Unit 6, Gateway 1000, Arlington Business Park, Whittle Way, Stevenage SG1 2FP | E(g)(i) Offices |
| Unit 7, Gateway 1000, Arlington Business Park, Whittle Way, Stevenage SG1 2FP | E(g)(i) Offices |
| Unit 8, Gateway 1000, Arlington Business Park, Whittle Way, Stevenage SG1 2FP | E(g)(i) Offices |
| Unit 9, Gateway 1000, Arlington Business Park, Whittle Way, Stevenage SG1 2FP | E(g)(i) Offices |
| Unit 10, Gateway 1000, Arlington Business Park, Whittle Way, Stevenage SG1 2FP | E(g)(i) Offices |
| Unit 11, Gateway 1000, Arlington Business Park, Whittle Way, Stevenage SG1 2FP | E(g)(i) Offices |
| Unit 12, Gateway 1000, Arlington Business Park, Whittle Way, Stevenage SG1 2FP | E(g)(i) Offices |
| Unit 13, Gateway 1000, Arlington Business Park, Whittle Way, Stevenage SG1 2FP | E(g)(i) Offices |
| Unit 14, Gateway 1000, Arlington Business Park, Whittle Way, Stevenage SG1 2FP | E(g)(i) Offices |
| Unit 15, Gateway 1000, Arlington Business Park, Whittle Way, Stevenage SG1 2FP | E(g)(i) Offices |

| Address | Use Class |
|--|-----------------|
| Unit 16, Gateway 1000, Arlington Business Park, Whittle Way, Stevenage SG1 2FP | E(g)(i) Offices |
| Unit 17, Gateway 1000, Arlington Business Park, Whittle Way, Stevenage SG1 2FP | E(g)(i) Offices |
| Unit 18, Gateway 1000, Arlington Business Park, Whittle Way, Stevenage SG1 2FP | E(g)(i) Offices |
| Unit 2, Arlington Court, Arlington Business Park, Whittle Way, Stevenage SG1 2FS | E(g)(i) Offices |
| Unit 3, Arlington Court, Arlington Business Park, Whittle Way, Stevenage SG1 2FS | E(g)(i) Offices |
| Unit 4, Arlington Court, Arlington Business Park, Whittle Way, Stevenage SG1 2FS | E(g)(i) Offices |
| Unit 7, Arlington Court, Arlington Business Park, Whittle Way, Stevenage SG1 2FS | E(g)(i) Offices |
| Unit 8, Arlington Court, Arlington Business Park, Whittle Way, Stevenage SG1 2FS | E(g)(i) Offices |
| Sterling Court, Norton Green Road, Stevenage SG1 2FZ | E(g)(i) Offices |
| Unit 2, Modular Business Park, Norton Green Road, Stevenage SG1 2FZ | E(g)(i) Offices |
| Unit 4, Modular Business Park, Norton Green Road, Stevenage SG1 2FZ | E(g)(i) Offices |
| Six Hills Court, Norton Green Road, Stevenage SG1 2FZ | E(g)(i) Offices |
| Solar House, Kings Way, Stevenage SG1 2UA | E(g)(i) Offices |
| Unit 2, Caxton Way, Stevenage SG1 2DF | E(g)(i) Offices |
| Cambridge House, Campus 6, Caxton Way, Stevenage, SG1 2XD | E(g)(i) Offices |
| Unit 4, Caxton Place, Caxton Way, Stevenage, SG1 2UG | E(g)(i) Offices |
| Caxton Point Business Centre, Caxton Point, Caxton Way, Stevenage SG1 2XU | E(g)(i) Offices |
| EMS House, Unit 1 Bowmans Trading Estate, Bessemer Drive, Stevenage SG1 2DL | E(g)(i) Offices |
| Unit 17, Bowmans Trading Estate, Bessemer Drive, Stevenage SG1 2DL | E(g)(i) Offices |
| Business and Technology Centre, Bessemer Drive, Stevenage SG1 2DX | E(g)(i) Offices |
| Haden House, Argle Way, Stevenage SG1 2AD | E(g)(i) Offices |
| 1 Viewpoint, Babbage Road, Stevenage SG1 2EQ | E(g)(i) Offices |
| 2 Viewpoint, Babbage Road, Stevenage SG1 2EQ | E(g)(i) Offices |
| 3 Viewpoint, Babbage Road, Stevenage SG1 2EQ | E(g)(i) Offices |
| 4 Viewpoint, Babbage Road, Stevenage SG1 2EQ | E(g)(i) Offices |
| 5 Viewpoint, Babbage Road, Stevenage SG1 2EQ | E(g)(i) Offices |
| 6 Viewpoint, Babbage Road, Stevenage SG1 2EQ | E(g)(i) Offices |
| 7 Viewpoint, Babbage Road, Stevenage SG1 2EQ | E(g)(i) Offices |

| Address | Use Class |
|---|-----------------|
| 8 Viewpoint, Babbage Road, Stevenage SG1 2EQ | E(g)(i) Offices |
| Unit 1, Hyatt Trading Estate, Babbage Road, Stevenage SG1 2EQ | E(g)(i) Offices |
| Fujitsu Site, Cavendish Road, Stevenage SG1 2DY | E(g)(i) Offices |
| Stevenage Borough Council Depot Site, Cavendish Road, Stevenage SG1 2ET | E(g)(i) Offices |
| Solutions House, Crompton Road, Stevenage SG1 2EE | E(g)(i) Offices |
| Unit 39, Crompton Road, Stevenage SG1 2EE | E(g)(i) Offices |
| Avnet House, Rutherford Close, Stevenage SG1 2EF | E(g)(i) Offices |
| Bedford House, Rutherford Close, Stevenage SG1 2EF | E(g)(i) Offices |
| Essex House, Rutherford Close, Stevenage SG1 2EF | E(g)(i) Offices |
| Middlesex House, Rutherford Close, Stevenage SG1 2EF | E(g)(i) Offices |
| Elopak House, Rutherford Close, Stevenage SG1 2EF | E(g)(i) Offices |
| Medway Court, Rutherford Close, Stevenage SG1 2EF | E(g)(i) Offices |
| Wiltron House, Rutherford Close, Stevenage SG1 2EF | E(g)(i) Offices |

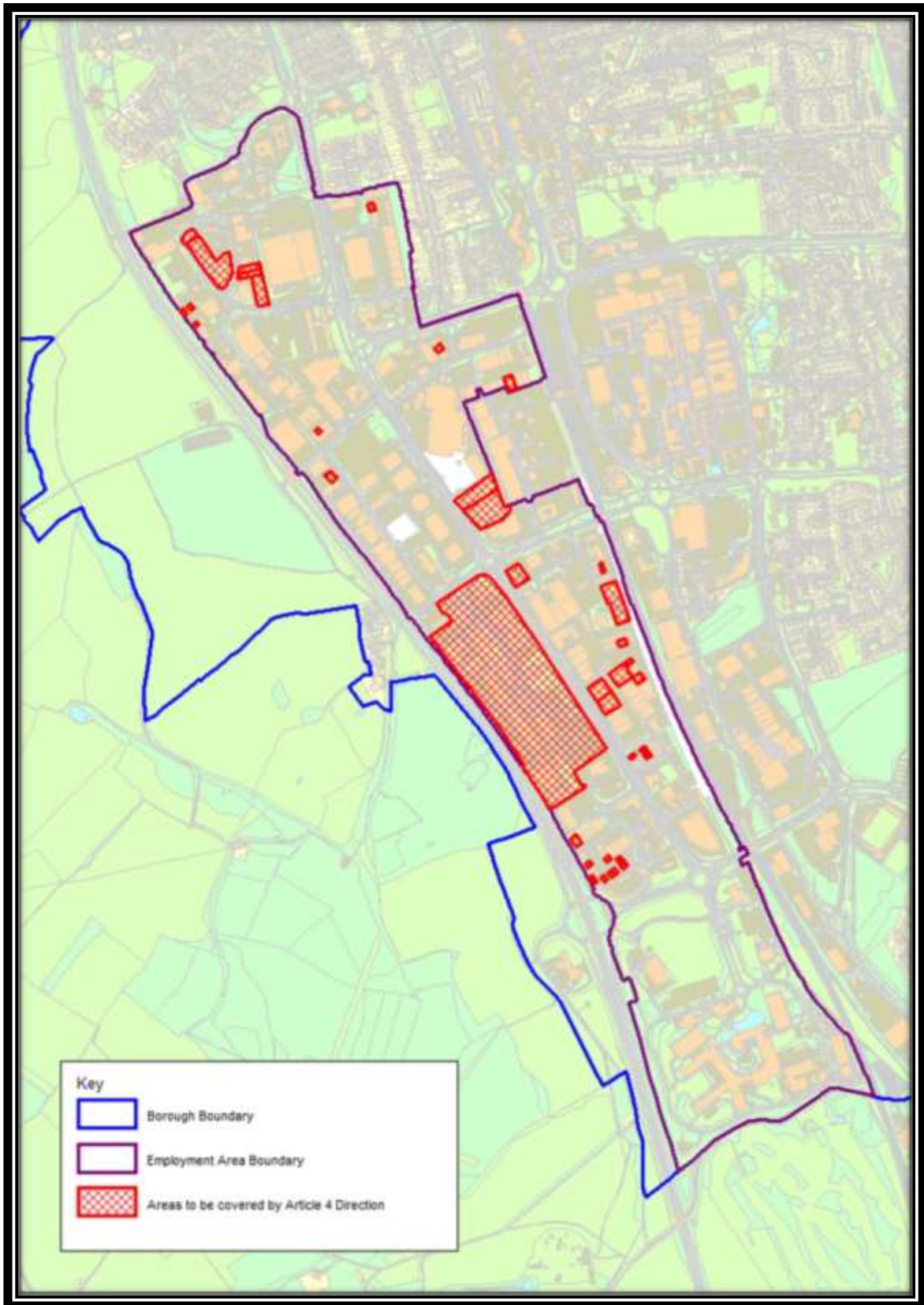
Pin Green Employment Area - E(g)(i) Offices



| Address | Use Class |
|---|-----------------|
| Unit 2, Wedgewood Court, Wedgewood Way, Stevenage SG1 4QR | E(g)(i) Offices |
| 3 Parsons Green Estate, Boulton Road, Stevenage SG1 4QG | E(g)(i) Offices |
| Unit 1, Boulton Road, Stevenage SG1 4QX | E(g)(i) Offices |
| Unit 21 Boulton Road, Stevenage SG1 4QL | E(g)(i) Offices |
| Aston House, Boulton Road, Stevenage SG1 4QX | E(g)(i) Offices |

| Address | Use Class |
|--|-----------------|
| Britannia House, Boulton Road, Stevenage SG1 4QX | E(g)(i) Offices |
| Niall House, Boulton Road, Stevenage SG1 4QX | E(g)(i) Offices |

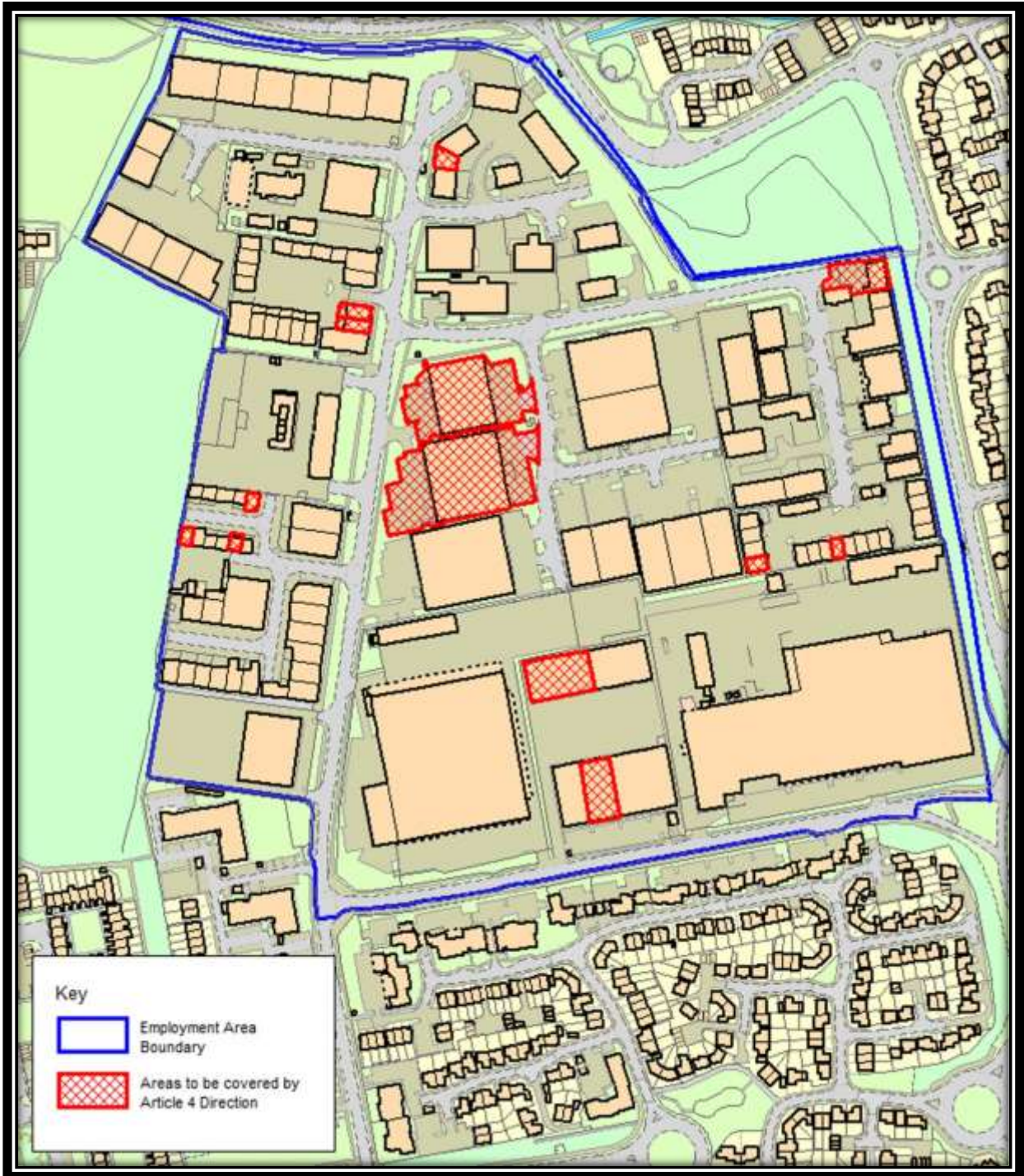
Gunnels Wood Employment Area – E(g)(iii) Industrial Processes



| Address | Use Class |
|--|--------------------------------|
| Unit 5 Leyden Road, Stevenage SG1 2BW | E(g)(iii) industrial processes |
| Unit 6 Leyden Road, Stevenage SG1 2BW | E(g)(iii) industrial processes |
| Unit 8 Leyden Road, Stevenage SG1 2BW | E(g)(iii) industrial processes |
| Unit 9 Leyden Road, Stevenage SG1 2BW | E(g)(iii) industrial processes |
| MBDA, Gunnels Wood Road, Stevenage SG1 2DA | E(g)(iii) industrial processes |
| Astrium, Gunnels Wood Road, Stevenage SG1 2BH | E(g)(iii) industrial processes |
| Sanders Building, Gunnels Wood Road, Stevenage SG1 2BH | E(g)(iii) industrial processes |
| Gunnels Wood Road Building, Gunnels Wood Road, Stevenage SG1 2BH | E(g)(iii) industrial processes |
| Unit N-O Gunnels Wood Park, Gunnels Wood Road, Stevenage SG1 2BH | E(g)(iii) industrial processes |
| Unit 1-2 Gunnels Wood Park, Gunnels Wood Road, Stevenage SG1 2BH | E(g)(iii) industrial processes |
| Unit 3-4 Gunnels Wood Park, Gunnels Wood Road, Stevenage SG1 2BH | E(g)(iii) industrial processes |
| Unit 8-9 Gunnels Wood Park, Gunnels Wood Road, Stevenage SG1 2BH | E(g)(iii) industrial processes |
| Unit 16-17 Gunnels Wood Park, Gunnels Wood Road, Stevenage SG1 2BH | E(g)(iii) industrial processes |
| Unit 21 Gunnels Wood Park, Gunnels Wood Road, Stevenage SG1 2BH | E(g)(iii) industrial processes |
| Glaxo Smith Kline, Gunnels Wood Road, Stevenage SG1 2BH | E(g)(iii) industrial processes |
| Unit B, Gateway 1000, Arlington Business Park, Whittle Way, Stevenage SG1 2FP | E(g)(iii) industrial processes |
| Unit C, Gateway 1000, Arlington Business Park, Whittle Way, Stevenage SG1 2FP | E(g)(iii) industrial processes |
| Unit D, Gateway 1000, Arlington Business Park, Whittle Way, Stevenage SG1 2FP | E(g)(iii) industrial processes |
| Unit F, Gateway 1000, Arlington Business Park, Whittle Way, Stevenage SG1 2FP | E(g)(iii) industrial processes |
| Unit G, Gateway 1000, Arlington Business Park, Whittle Way, Stevenage SG1 2FP | E(g)(iii) industrial processes |
| Unit H, Gateway 1000, Arlington Business Park, Whittle Way, Stevenage SG1 2FP | E(g)(iii) industrial processes |
| Unit J, Gateway 1000, Arlington Business Park, Whittle Way, Stevenage SG1 2FP | E(g)(iii) industrial processes |
| Unit K, Gateway 1000, Arlington Business Park, Whittle Way, Stevenage SG1 2FP | E(g)(iii) industrial processes |
| Unit 7, The IO Centre, Arlington Business Park, Whittle Way, Stevenage SG1 2BD | E(g)(iii) industrial processes |

| Address | Use Class |
|---|--------------------------------|
| Unit 12, The IO Centre, Arlington Business Park, Whittle Way, Stevenage SG1 2BD | E(g)(iii) industrial processes |
| Balbir House, Vishkarma Park, Norton Green Road, Stevenage, SG1 2LP | E(g)(iii) industrial processes |
| Unit 3, Modular Business Park, Norton Green Road, Stevenage, SG1 2FZ | E(g)(iii) industrial processes |
| Phosphor Technology Ltd Site, Norton Green Road, Stevenage, SG1 2FZ | E(g)(iii) industrial processes |
| Unit 2, Caxton Place, Caxton Way, Stevenage SG1 2UG | E(g)(iii) industrial processes |
| Unit 4, Bowmans Trading Estate, Bessemer Drive, Stevenage SG1 2DL | E(g)(iii) industrial processes |
| Unit B, Argyle Gate, Argyle Way, Stevenage SG1 2AD | E(g)(iii) industrial processes |
| Unit 8, Fulton Close, Stevenage SG1 2AF | E(g)(iii) industrial processes |
| Unit 6 Hyatt Trading Estate, Babbage Road, Stevenage SG1 2EQ | E(g)(iii) industrial processes |
| Unit 9 Hyatt Trading Estate, Babbage Road, Stevenage SG1 2EQ | E(g)(iii) industrial processes |
| Unit 11 Hyatt Trading Estate, Babbage Road, Stevenage SG1 2EQ | E(g)(iii) industrial processes |
| Alchemy Metals Ltd Site, Cavendish Road, Stevenage SG1 2EU | E(g)(iii) industrial processes |
| Kalstan Engineering Ltd Site, Cavendish Road, Stevenage SG1 2ET | E(g)(iii) industrial processes |
| Stevenage Glass Company Site, Cavendish Road, Stevenage SG1 2EU | E(g)(iii) industrial processes |
| National Pile Croppers Site, Crompton Road, Stevenage SG1 2EE | E(g)(iii) industrial processes |
| Stanley J Murphy Site, Crompton Road, Stevenage SG1 2EE | E(g)(iii) industrial processes |
| Unit 3, The Orbital Centre, Cockerell Close, Stevenage SG1 2NB | E(g)(iii) industrial processes |

Pin Green Employment Area – E(g)(iii) Industrial Processes



| Address | Use Class |
|---|--------------------------------|
| Unit 28, Wedgewood Way, Stevenage, SG1 4QT | E(g)(iii) industrial processes |
| Unit 29, Wedgewood Way, Stevenage, SG1 4QT | E(g)(iii) industrial processes |
| Unit 17, Wedgewood Gate Industrial Estate, Wedgewood Way, Stevenage SG1 4SU | E(g)(iii) industrial processes |
| Unit 21, Wedgewood Gate Industrial Estate, Wedgewood Way, Stevenage SG1 4SU | E(g)(iii) industrial processes |
| Unit 25, Wedgewood Gate Industrial Estate, Wedgewood Way, Stevenage SG1 4SU | E(g)(iii) industrial processes |
| Unit 3, Wedgewood Court, Wedgewood Way, Stevenage SG1 4QR | E(g)(iii) industrial processes |
| Unit 11, Parsons Green Estate, Boulton Road, Stevenage SG1 4QG | E(g)(iii) industrial processes |
| Unit 15, Parsons Green Estate, Boulton Road, Stevenage SG1 4QG | E(g)(iii) industrial processes |
| Unit 22, Boulton Road, Stevenage SG1 4QX | E(g)(iii) industrial processes |
| Unit 9-10 Eastman Way, Stevenage SG1 4QT | E(g)(iii) industrial processes |
| Unit 2 Cartwright Road, Stevenage SG1 4QJ | E(g)(iii) industrial processes |
| Unit 5-6 Cartwright Road, Stevenage SG1 4QJ | E(g)(iii) industrial processes |