

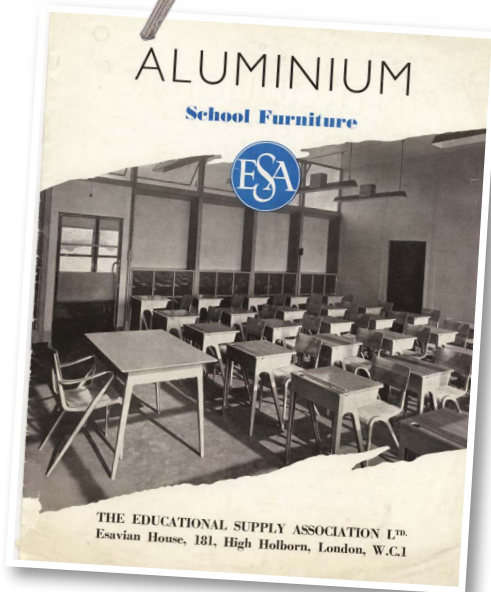
# Exhibitions

## James Leonard: Industrial Artist

**Until 21 February**

The Educational Supply Association was one of the town's biggest employers for over 100 years. After the Second World War they began to make a new range of modern, clean-lined school furniture fit for the future, using skills learnt in the manufacture of Mosquito aircraft wings.

Jim Leonard's designs are in the Museum of Modern Art in New York, the Pompidou in Paris and the V&A in London. . . and now Stevenage Museum.



## Six Hills Secrets

**7 March – 25 April**

Artworks that celebrate the people and places of Stevenage.

## In the foyer

**Mosaics**

**Until 7 February**



## Drone photography

**14 February – 25 April**

## Dance like it's 1946!

**Saturday 31 January**

We've got the dancers from Jive Swing coming to show you their moves and help us get Stevenage New Town's 80th anniversary year off to a great start. Great to watch, even better to join in!

**FREE**



## Art with Sandy

**Saturday 14 March 11am-1pm**

Sandy from Junction 7 Creatives is visiting. Families and can come early and adults plus over 12s who might like a quieter session, after 12noon.

**FREE**

## Quiz Night

**Wednesday 25 March 6.00-8.30pm**

£9 per person, includes a cheese platter, bring your own drinks.

**Booking essential.**



## Earth Day

**Saturday 18 April, 12noon-4pm**

Tips for how to live sustainably, art and crafts including button art and a takeaway mending kit, a visit from the repair café and other local groups who work to protect the planet.



**FREE**

# For adults

## Feel good Fridays

### Museum meet up

Meet new people, have a cuppa and a chat or play a game or two.

**30 January**

**27 February**

**27 March**

**24 April**

**10.30-11.30am**



**FREE**

### Lunch and listen

**1.00pm**

Enjoy a lunchtime talk. Subjects are varied but we hope you will always learn something new and interesting! Numbers are limited so please book in advance. Tea and coffee provided just bring your own sandwiches.



**Friday 9 January**

The story of the Educational Supply Association.



**Friday 13 February**

British history since 1840 as told through postage stamps.



**Friday 13 March**

The British Schools Museum, Hitchin, from 1810 to the present day.

**Friday 10 April**

The story of Trinity College Cambridge.

**Cost: £4 (£3.50 concessions).**

## Make it!

**FREE**

Come along, get creative and meet others who enjoy the fun and benefits of sewing, knitting and crochet. Just bring sandwiches and whatever you are working on or materials to start from scratch. Tea and Coffee provided.

**January 2, 16 & 30**

**February 6 & 27**

**March 6, 20 & 27**

**April 10 & 24**

**12noon to 2pm**



## Saturday film and afternoon tea

**24 January**

**28 February**

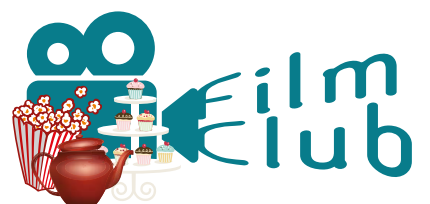
**28 March**

**25 April**

**12.30pm. Suitable for over 14s.**

**Booking essential**

**£9 per person.**





# For families

## Pop up Play!

The Lecture Room will be open as well as the existing play spaces around the museum with lots of opportunities for play of all kinds.

Open most Fridays 10-11.30am and Saturdays 10am-12noon. Check the website for dates and time.

Free! But donations welcome and refreshments available.

## Family Saturdays

11-12noon

10 January Winnie the Pooh @100  
14 February Love Hearts  
14 March Henri Matisse paper cuts (plus visiting artist Sandy)  
11 April April showers

FREE



# Holiday activities

## February half term

### KPop demon hunters and ... Romans

Wednesday 18 February to Friday 20 February  
10.30-11.30am and 1-2pm.  
£4 (£3 concessions)

## Easter Holidays

### Animal Action!

Wednesday 8 April  
11-12noon and 12.30-1.30pm

Teaching Talons are back at the museum with their fabulous array of small animals and informed and entertaining staff. £6 (£5 concessions), £20 for a group ticket (up to 4 people). If price is a barrier, get in touch as we have a very limited number of heavily subsidised places.

### Arty Action!

Wednesday 1 April and Thursday 9 April  
11am-3pm

Free drop in arts and crafts. Plus try our new activity packs, available in the shop for a small fee. Pick one up to do in the session or take it away to do at home.



FREE

Admission to the museum is  
**FREE**

# What's On at Stevenage Museum

January - April 2026

Large print versions of this What's On are available, just ask! If you no longer wish to receive this what's on, please get in touch and we'll take your name off the list.

## Visiting us

Stevenage Museum, St George's Way, SG1 1XX

## Contact us and information

Tel: 01438 218881

Email: [museum@stevenage.gov.uk](mailto:museum@stevenage.gov.uk)

Visit: [www.stevenage.gov.uk/stevenage-museum](http://www.stevenage.gov.uk/stevenage-museum)

To book tickets, visit:

[www.ticketsource.co.uk/whats-on/stevenage/stevenage-museum](http://www.ticketsource.co.uk/whats-on/stevenage/stevenage-museum)

## Opening hours:

Wednesday to Friday 10am to 4.30pm,  
Saturday 10am to 5pm



**Stevenage**  
BOROUGH COUNCIL

**STEVENAGE**  
**museum**