

Covid-19 Update Presentation

Executive

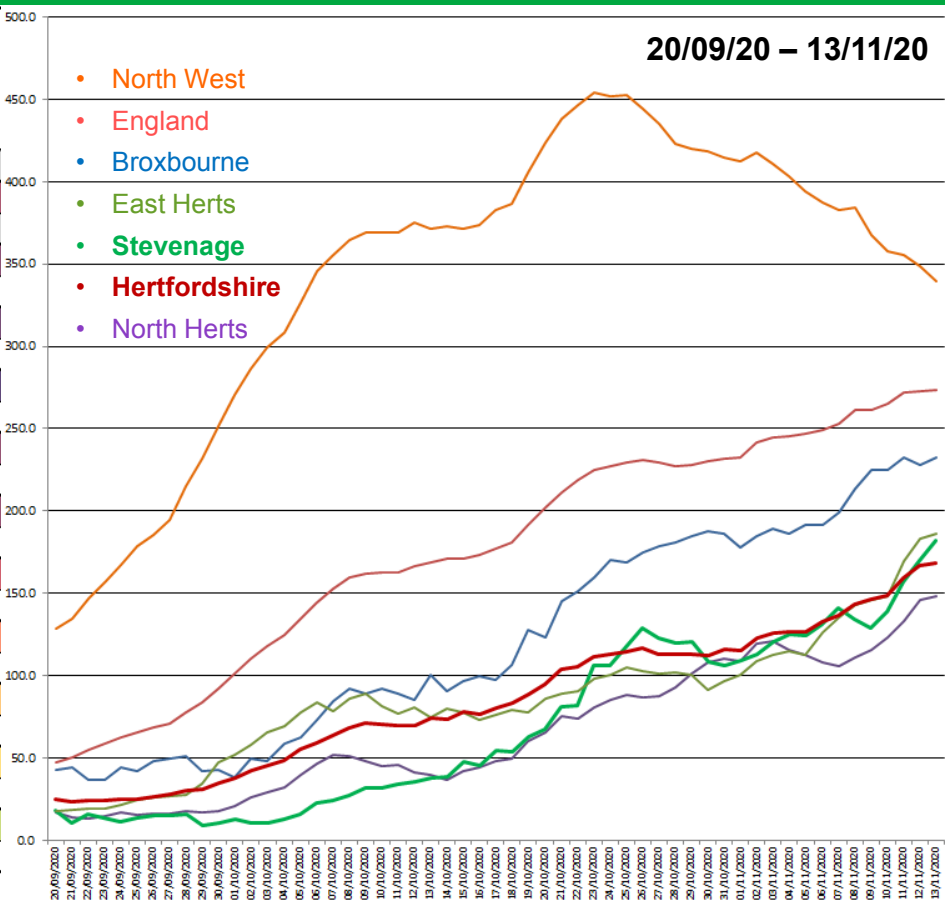
18th November 2020

UK Covid-19 Position

- Cases continue to rise throughout the majority of England.
- The latest UK & England 'R' rate is slightly down to 1.1-1.2
It remains the same in the East of England at 1.1-1.4
- The Government expects to see the positive effects of the current lockdown, over the next week.
- The 7 day rolling average for hospital admission for Covid-19 patients continue to rise, now at 1,696 per day, up from 1,503 last week
- Daily average UK Coronavirus-related deaths up at over 413 compared to 332 last week.

National & Local Cases

*provisional	Broxbourne	Three River	East Herts	Stevenage	Watford	Welwyn H	St Albans	North Herts	Hertsmere	Dacorum	Hertfordshire	England	North West
provisional change	40	69	90	45	4	-5	79	54	30	18	424	13,906	-3,487
07.11 - 13.11 / 100,000	232.3	196.1	186.3	182.1	181.2	160.1	161.0	148.2	145.8	124.7	168.4	273.8	339.7
07.11 - 13.11	226	183	279	160	175	197	239	198	153	193	2,003	154,107	24,936
31.10 - 06.11 / 100,000	191.2	122.2	126.2	130.9	177.1	164.2	107.8	107.8	117.2	113.1	132.7	249.1	387.2
31.10 - 06.11	186	114	189	115	171	202	160	144	123	175	1,579	140,201	28,423
24.10 - 30.10 / 100,000	188.1	94.3	91.5	108.1	176.0	120.3	70.7	107.8	135.3	78.8	112.1	230.5	418.2
24.10 - 30.10	183	88	137	95	170	148	105	144	142	122	1,334	129,737	30,704
17.10 - 23.10 / 100,000	159.3	125.4	98.2	105.9	139.8	112.2	86.9	80.9	137.2	102.1	111.3	225.2	454.3
17.10 - 23.10	155	117	147	93	135	138	129	108	144	158	1,324	126,777	33,348
10.10 - 16.10 / 100,000	99.7	99.7	73.5	45.5	103.5	86.1	58.6	44.2	107.7	70.4	76.8	173.4	373.8
10.10 - 16.10	97	93	110	40	100	106	87	59	113	109	914	97,620	27,439
03.10 - 09.10 / 100,000	89.4	93.2	88.8	31.9	96.3	63.4	55.9	47.9	85.8	65.3	71.0	162.1	368.9
03.10 - 09.10	87	87	133	28	93	78	83	64	90	101	844	91,264	27,082
26.09 - 02.10 / 100,000	49.3	42.9	58.1	10.2	60.1	31.7	42.4	26.2	54.3	42.6	42.2	110.8	286.7
26.09 - 02.10	48	40	87	9	58	39	63	35	57	66	502	62,338	21,049
19.09 - 25.09 / 100,000	42.1	41.8	24.7	13.7	34.2	17.1	29.0	15.7	24.8	18.7	25.4	65.9	178.5
19.09 - 25.09	41	39	37	12	33	21	43	21	26	29	302	37,110	13,104
12.09 - 18.09 / 100,000	43.2	15.0	12.7	20.5	28.0	10.6	31.7	18.7	44.8	12.9	22.9	38.8	105.4
12.09 - 18.09	42	14	19	18	27	13	47	25	47	20	272	21,822	7,740
05.09 - 11.09 / 100,000	16.4	18.2	11.4	30.7	22.8	34.9	35.0	16.5	35.3	10.3	22.6	34.7	75.8
05.09 - 11.09	16	17	17	27	22	43	52	22	37	16	269	19,539	5,564
29.08 - 04.09 / 100,000	19.5	22.5	8.0	18.2	20.7	18.7	20.9	9.0	60.0	18.7	20.7	23.3	42.8
29.08 - 04.09	19	21	12	16	20	23	31	12	63	29	246	13,087	3,145
Total 29.08-13.11	424	358	420	203	419	330	478	265	539	364	3,801	245,433	78,373

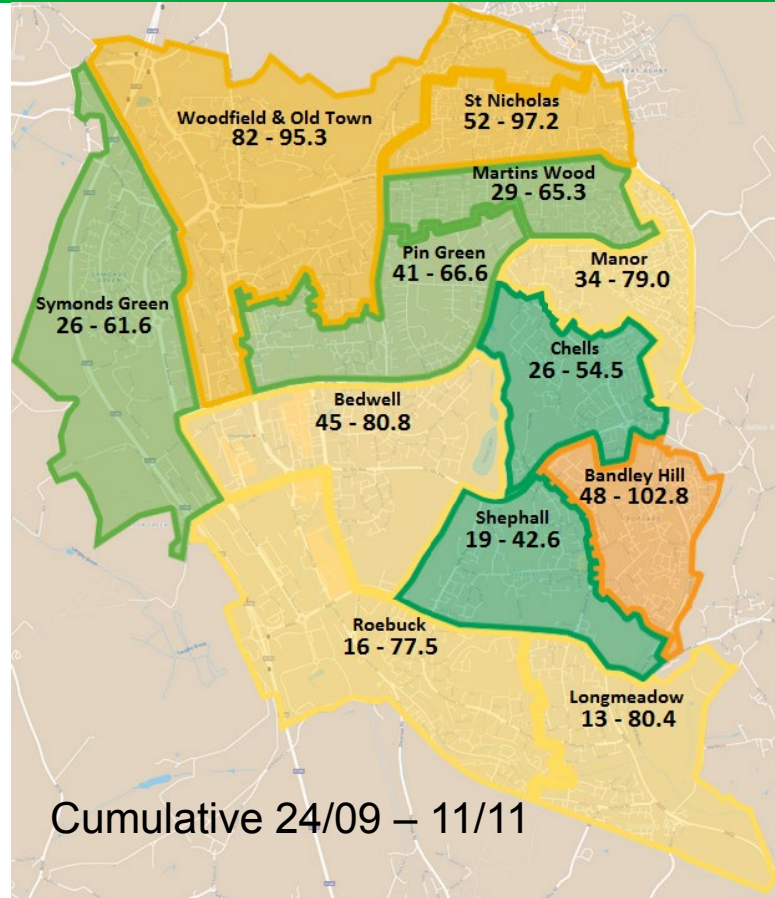
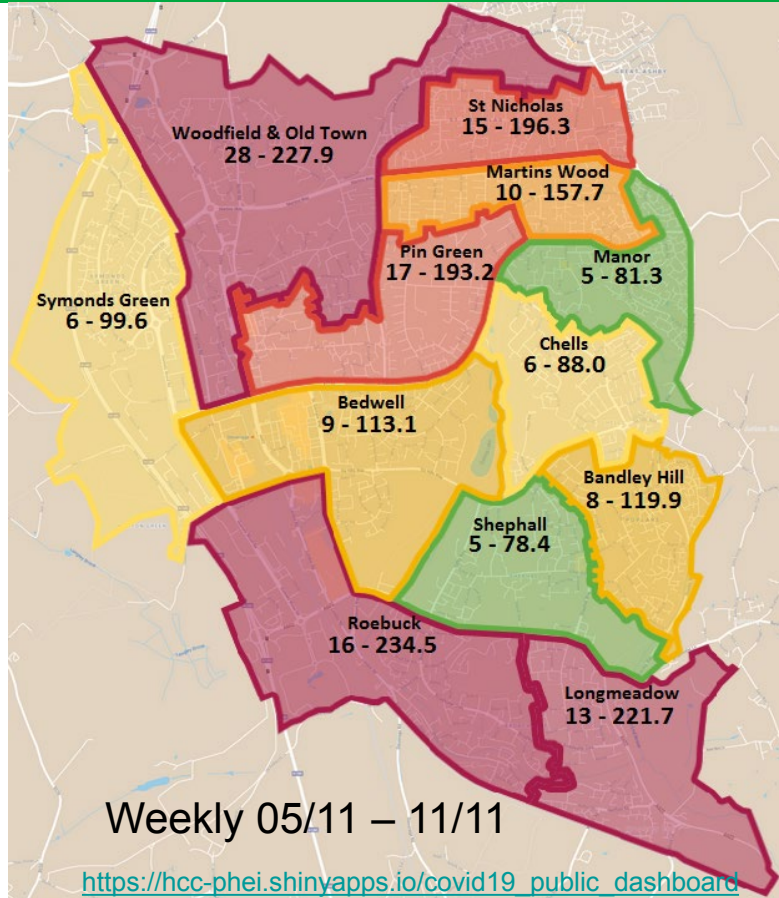


Deaths

Week	Hertsmere	Watford	Three Rivers	St Albans	Welwyn Hatfield	Dacorum	Broxbourne	North Hertfordshire	Stevenage	East Hertfordshire	Total
Total last 10 weeks	13	11	6	7	1	13	7	3	2	3	66
31/10 – 6/11	3	1	0	0	0	2	2	1	1	1	11
24/10 – 30/10	2	0	1	1	0	2	0	1	1	0	8
17/10 – 23/10	3	5	1	1	0	3	1	1	0	0	15
10/10 – 16/10	1	1	2	1	1	2	1	0	0	0	9
03/10 – 09/10	1	1	2	1	0	3	2	0	0	1	11
26/09 – 02/10	0	1	0	1	0	0	1	0	0	0	3
19/09 – 25/09	2	0	0	1	0	0	0	0	0	0	3
12/09 – 18/09	0	0	0	0	0	0	0	0	0	1	1
05/09 – 11/09	1	1	0	1	0	0	0	0	0	0	3
29/08 – 04/09	0	1	0	0	0	1	0	0	0	0	2
Rate per 100,000	186.8	141.9	100.7	98.3	92.7	89.8	85.3	75.6	70.6	69.5	98.9
Total	196	137	94	146	114	139	83	101	62	104	1,176

- The deaths data released by ONS has a two week delay in publication.
- There have been 1,176 coronavirus related deaths across all settings and districts within Hertfordshire since the start of the pandemic.
- Of these, 66 have occurred in the last 10 catalogued weeks starting from the 29th August 2020 up to the 6th November 2020.
- Stevenage has had 62 total deaths since the start of the pandemic.
- Two have occurred since the 29th August 2020

Stevenage confirmed cases Geography



Stevenage Covid-19 Position

- Between 1st and 13th of November, 1.7% of Stevenage residents were tested for Covid-19, slightly above the all-Herts average of 1.6%
- Positivity is still in line with the all-Herts average, both steadily increasing from around 17.5% to 18.6%
- Cases continue to be most prevalent in the 25-39 and 40-59 age groups. However, in the last four weeks cases in the 0-16 category have doubled on average.
- Since the start of September 0.55% of total Stevenage residents have contracted Covid-19. This is highest in the 20-39 age group at 0.83%, and lowest in the 80+ group at 0.22%.
- Overall these numbers are higher on average with 1.03% of total Stevenage residents having contracted Covid-19. This is highest in the 80+ group at 1.98% and lowest in the 0-19 group at 0.45%. However, testing capacity during the early months means many fewer cases were able to be identified.
- No data is released by the Government as to compliance with isolation. Although preliminary nationally sampled research from [King's College London](#) (18th September) suggests it may be as low as 18%.

National Update

- The three-tier alert system of coronavirus restrictions in England likely to be strengthened
- Vaccines Taskforce has secured access to 355 million doses through seven leading manufacturers in the world
- Two Mega Labs are to open early next year boosting daily capacity by up to 600,000 and creating 4000 jobs.
- Outbreaks in care homes in England have increased to nearly 400 a month; a 44% increase on previous month. Family and friends of people in care homes to get access to regular testing.
- Number of school age children with Covid-19 has risen significantly in second wave compared with first. Children with families however at no higher risk of severe illness.
- ONS data shows people aged 50 to 69 most likely to break lockdown rules
- Covid fines paid are yet to be passed onto councils

Hertfordshire Resilience Update

- North and East Herts Health Trust - hospital admissions steadily increasing. Not at 1st wave peak as yet. 22 positive cases, 3 in critical care
- 2215 requests for support received from 45,000 Clinically Extremely Vulnerable Individuals. Mainly priority online shopping requests
- 68 care homes have had a positive Covid-19 case involving either a member of staff or resident over the last 28 days
- Mosques considered. Separate strand for care homes, housebound, primary carers
- Concerns regarding impact on dentist waiting lists – 4 month backlog



Self Isolation Rules

Coronavirus Incubation timeline

It can take up to 14 days to develop symptoms after exposure - this is known as the incubation period.



DAY 0

Hannah was exposed to coronavirus.

DAY 5

Hannah got tested and was negative.

DAY 7

Thinking she didn't have coronavirus, Hannah attended school, and was in close contact with 17 people.

DAY 9

Hannah developed symptoms and tested positive. She was contagious for 48 hours before her symptoms started, and exposed 17 people to coronavirus. These 17 people now all need to self-isolate for 14 days.



This is why it's so important to self-isolate for the allocated time and to only book a test if you develop symptoms.

When should I self-isolate and how long for?

If you develop symptoms	10 days from start of symptoms
If you test positive	10 days from start of symptoms or test day if none
If you are told you've been in close contact with someone who has tested positive	14 days from last contact with the positive case
If you have been contacted by the Test and Trace service	14 days from last contact with positive case
If you live in a household where others (including children) develop symptoms or they have tested positive	14 days from when they developed symptoms or test day if none
If you have been sent home and told to self-isolate as part of a bubble. Other household members do not need to self-isolate unless someone in the household develops symptoms or tests positive	14 days from last contact with positive case

Mass Vaccination Planning

- 2 vaccination sites are to be ready by 1st Dec in Three Rivers and Epping, others to follow 11th Jan.
- Pipeline of sites will then be made ready for 11th January – expected as being peak vaccine week
- 18 pods between Herts and Essex that can be disbanded and then pop up at another location
- Internal Assets only – 30 minutes commute max / 7 days a week
- Separate strand for care homes, primary carers, housebound
- NHS cannot stand down core services – may need help from SCG partners
- Resourcing plan being developed



Outbreak Management and Contact Tracing

- Herts to receive 10K rapid lateral flow tests.
- Focus on supermarkets and other multiple retailer
- Self-isolation support approach being scoped with police
- Increased contact tracing (CT) capacity at HCC contact centre from 16 November
- Additional SBC staff deployed to CT from 23 November
- CT scale-up project now launched providing additional resources to all Herts districts



Community and Housing Update

Clinically Extremely Vulnerable Individuals

- The Volunteer People Assistance Cell and the District lead officers will meet today to review assistance requested and agree further actions to assist those medically shielding during lockdown. Stevenage Helps has received a small number of calls in relation to this.

Leisure and Community Buildings

- All SLL sites remain closed and SLL are re-working their business plan based on the current lockdown. A number of Community Centres remain open for essential childcare. Meetings have been offered to all community associations to guide through this period.

Homelessness/Housing First and successful bid

- The Council is currently accommodating and supporting 155 households in temporary and emergency accommodation, an increase of 6 cases since last week - 47 of these are in hotel accommodation.

Business Support

- The local Restrictions Grant is now live. This has been promoted through business liaison activities.
- We are awaiting for the Additional Restrictions Grant funding.
- We are working with partners on areas of support but too early to promote.
- Hospitality businesses granted extension to provide takeaway services until March 2022



SBC Business Continuity and Workforce

- Weekly senior team assessment and daily check ins. Absence is stable though recognise pressures on particular services
- Resource has been redeployed to support essential frontline services and contact tracing this week, alongside a review of resource requirements for Stevenage Helps, Covid Marshalling
- Need to develop a 9 month plan to resource emergency response teams
- Welfare support package in place
- Assessing medium-term priorities and Forward Plan



Communications update

- Chronicle Covid Special to be included with Autumn 2020 issue for residents. Delivery 20 November onwards.
- #StaySafeStevenage Campaign ongoing - digital/online/print
- Self-isolation messages shared on social media
- Digital screens/boards: In progress following Director of Public Health support and approval
- Wardens continue distributing masks to local people
- Frequently Asked Questions - updated on the council's website



Stevenage Borough Council
9 November at 10:42 · 🌐

27% of people in Herts say they'd go shopping even if asked to self isolate – but it's not the same as lockdown. If you go out, you risk being fined, spreading the illness, and putting lives at risk. For support, contact www.hertshelp.net
[#SelfIsolateMeansStayAtHome](https://twitter.com/StevenageBC)

SELF ISOLATE
MEANS NOT
"JUST POPPING
TO THE SHOPS"



2,009
People reached

39
Engagements

Boost post