

Coronavirus Emergency Committee

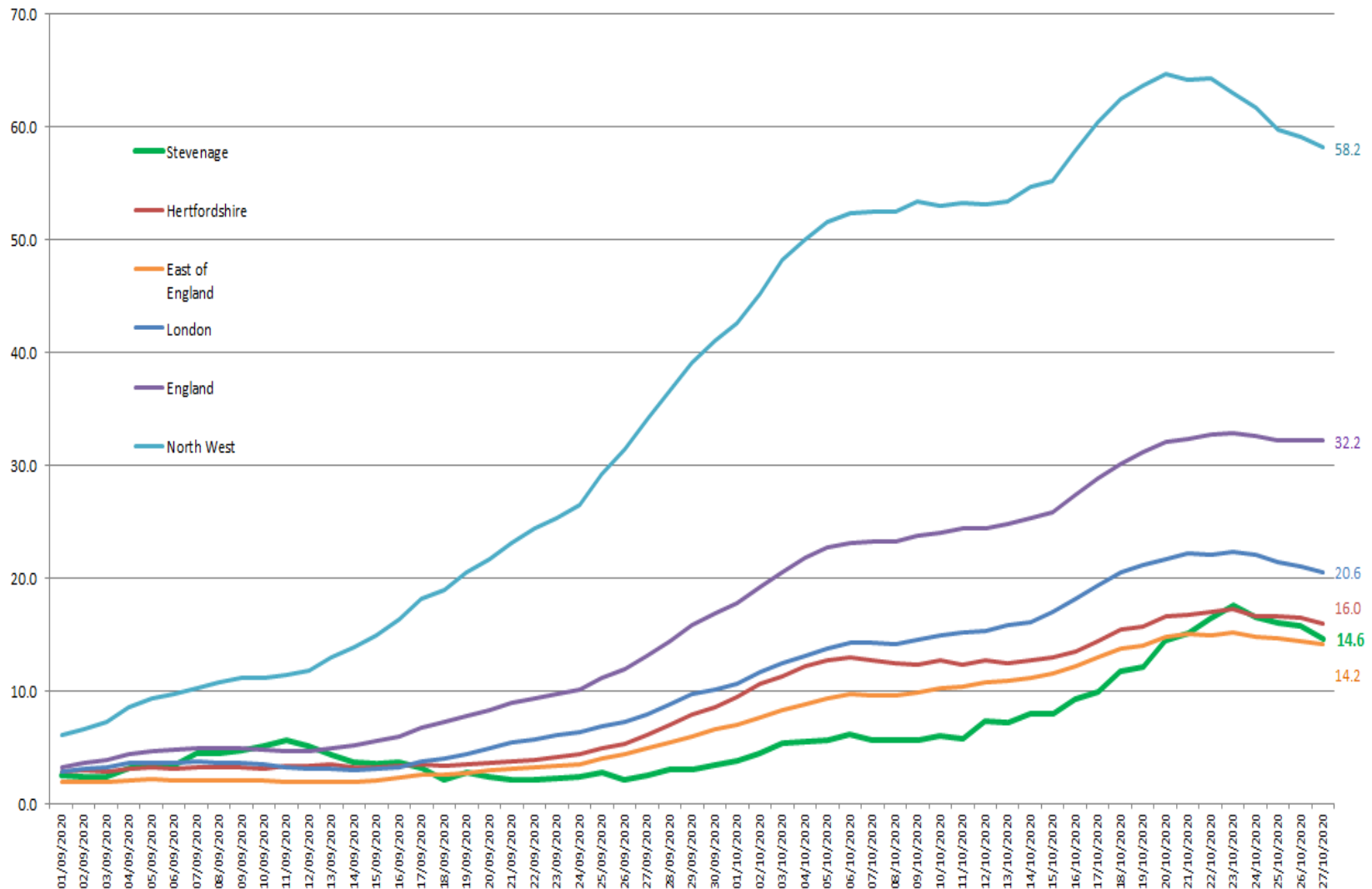
4 November 2020

UK Covid-19 Position

- Cases continuing to rise exponentially
- Over 1 million Covid-19 cases confirmed
- UK 'R' rate is currently between 1.1-1.3
- Hospital admission rates for Covid-19 patients are rising with over 1000 new admissions each day
- Coronavirus deaths in England and Wales up 53% on last week - current official total of 46,853

Epidemiology: Normalised Daily Cases

(7 day rolling average per 100,000)

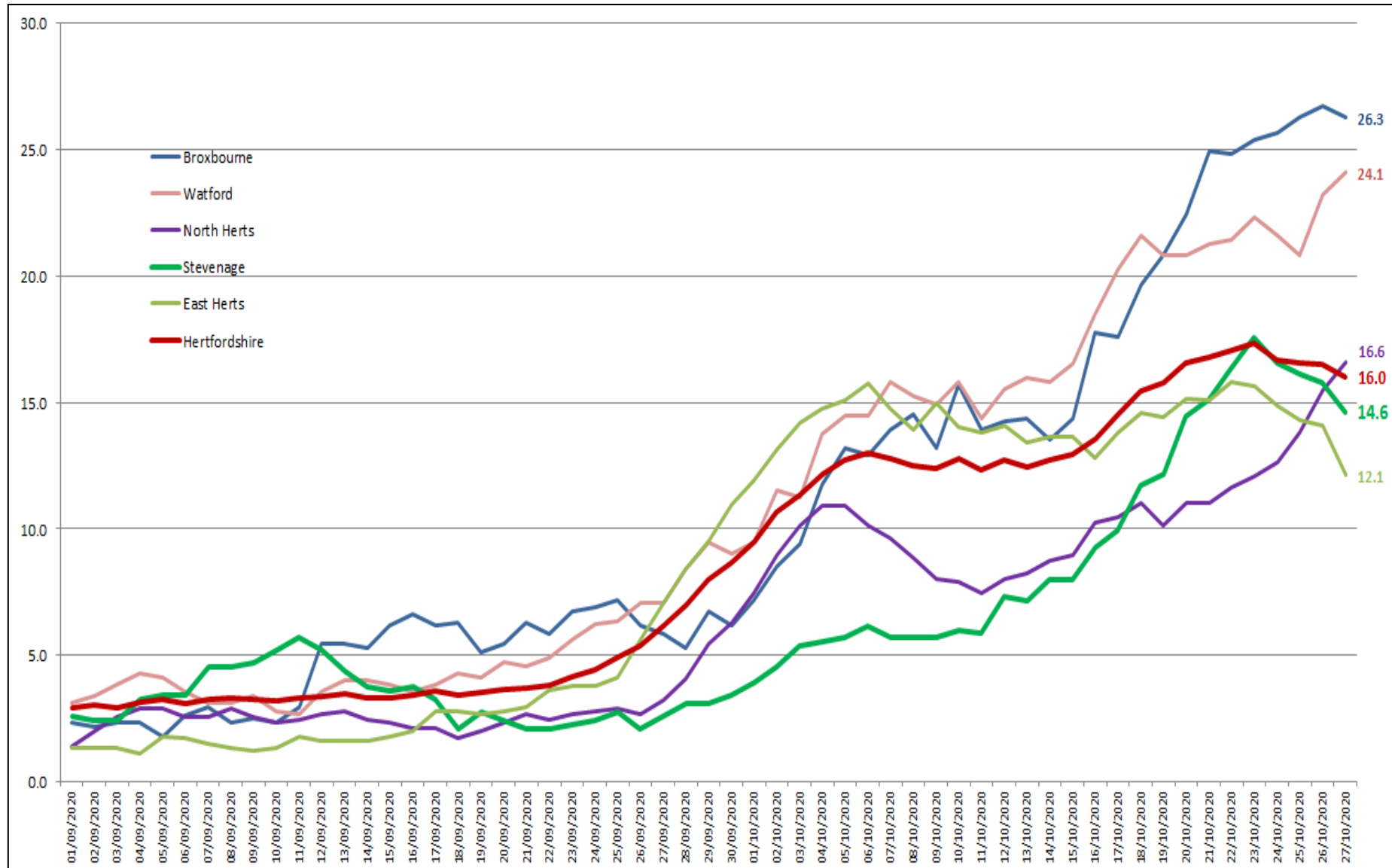


Hertfordshire Epidemiology

*provisional	Broxbourne	Watford	Hertsmere	North Herts	Welwyn H	Stevenage	Three River	Dacorum	East Herts	St Albans	Hertfordshire
weekly change	26	22	-19	52	-2	1	-30	-37	-32	-28	-47
24/10 - 30/10 per 100,000	184.0	168.8	134.4	116.0	110.5	102.5	101.8	83.4	84.8	80.2	112.1
24/10 - 30/10	179	163	141	155	136	90	95	129	127	119	1334
17/10 - 23/10 per 100,000	157.3	146.0	152.5	77.1	112.2	101.3	133.9	107.3	106.2	99.0	116.1
17/10 - 23/10	153	141	160	103	138	89	125	166	159	147	1,381
10/10 - 16/10 per 100,000	100.7	111.8	115.3	57.6	89.4	50.1	114.7	78.2	94.2	73.4	87.1
10/10 - 16/10	98	108	121	77	110	44	107	121	141	109	1,036
03/10 - 09/10 per 100,000	90.5	101.5	121.0	71.1	69.1	43.3	128.6	85.9	110.2	88.9	90.9
03/10 - 09/10	88	98	127	95	85	38	120	133	165	132	1,081
26/09 - 02/10 per 100,000	47.3	66.3	87.7	38.2	39.8	21.6	54.6	56.9	66.8	70.1	55.8
26/09 - 02/10	46	64	92	51	49	19	51	88	100	104	664
19/09 - 25/09 per 100,000	41.1	34.2	27.6	17.2	19.5	14.8	40.7	22.0	25.4	32.3	26.9
19/09 - 25/09	40	33	29	23	24	13	38	34	38	48	320
12/09 - 18/09 per 100,000	43.2	26.9	42.9	16.5	13.0	25.0	12.9	12.3	12.7	34.4	23.0
12/09 - 18/09	42	26	45	22	16	22	12	19	19	51	274
05/09 - 11/09 per 100,000	16.4	21.7	38.1	20.2	34.9	31.9	18.2	9.0	9.3	37.0	23.1
05/09 - 11/09	16	21	40	27	43	28	17	14	14	55	275
29/08 - 04/09 per 100,000	16.4	21.7	62.0	9.7	18.7	18.2	20.4	18.7	9.3	18.9	20.5
29/08 - 04/09	16	21	65	13	23	16	19	29	14	28	244
Total 29/08 - 30/10	412	434	656	333	366	248	404	436	474	611	4,373

Hertfordshire Normalised Daily Cases

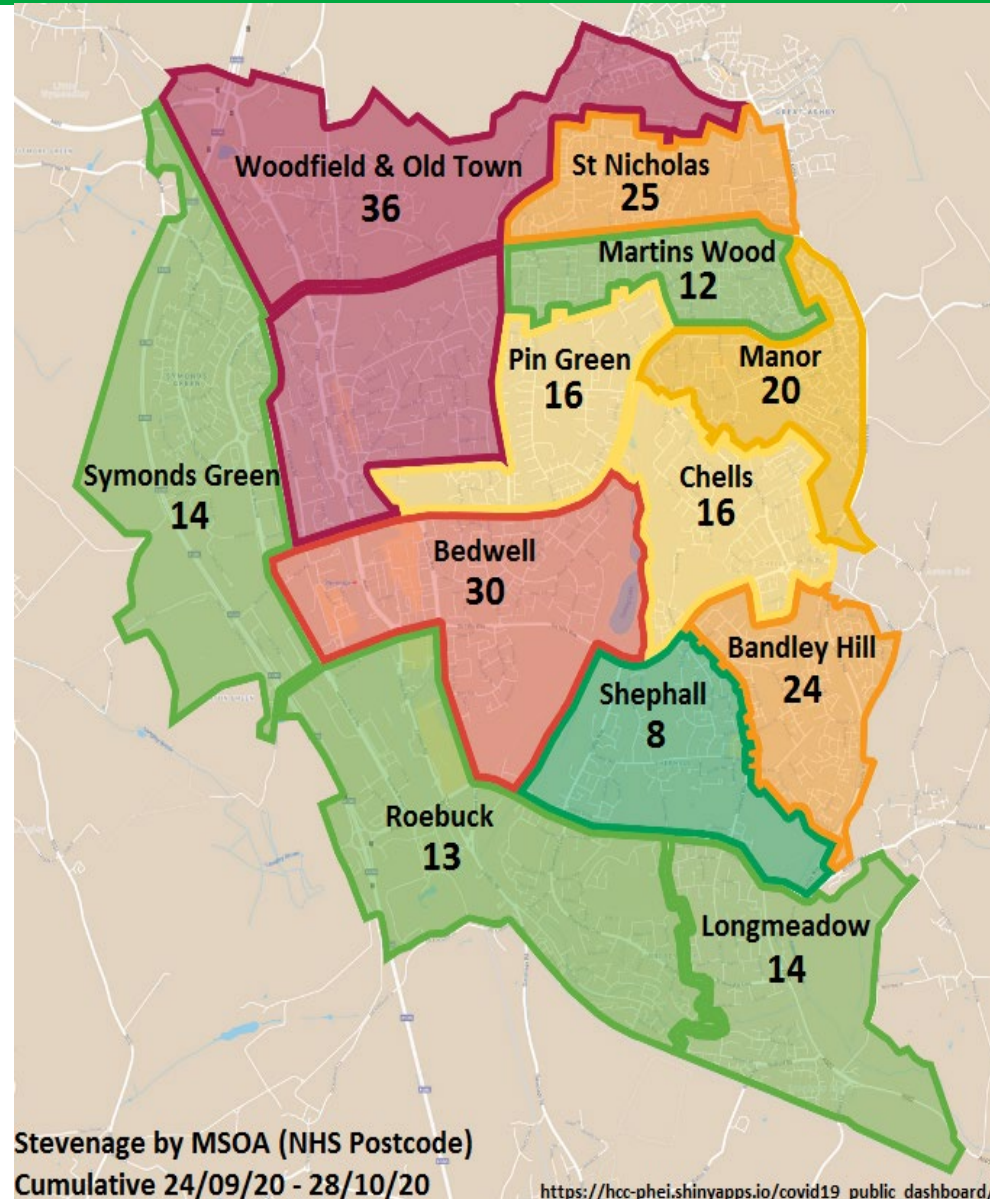
(7 day rolling average per 100,000)



Local Covid-19 cases (24/09 – 28/10)

- There is a reasonable of cases spread throughout the town.
- The Hertfordshire Public Dashboard utilises Middle Layer Super Output Areas (MSOA) of the Office for National Statistics (ONS).
- This is why Woodfield and Old Town are shown combined.
- These numbers have not been normalised for population or population density, which do vary across the wards.
- However, the numbers in Stevenage are still small enough, than a degree of randomness is present in the spread of cases.

https://hcc-phei.shinyapps.io/covid19_public_dashboard/



National Restrictions

Stay at home

- People must not leave or be outside their home except for specific purposes. These include
 - For childcare or education
 - For work purposes, where people cannot work from home
 - To exercise outdoors or visit an outdoor public place
 - For any medical concerns and to avoid or escape domestic abuse
 - Shopping for basic necessities, for example food and medicine
 - To visit members of your support bubble
- People must not meet socially indoors with family or friends unless they are part of their household or support bubble
- Overnight stays and holidays will not be allowed.

National Restrictions

Weddings, civil partnerships, religious services and funerals

- Funerals can be attended by a maximum of 30 people
- Weddings, civil partnership ceremonies will not be permitted except in exceptional circumstances
- Places of worship will be closed unless being used for funerals, individual prayer, broadcasting acts of worship, formal childcare, blood donation or food banks

Childcare and children's activities

- Early settings can remain open
- Registered childcare and other childcare activities can continue to enable parents to work or for respite care
- Parents can form a childcare bubble with another household for the purpose of informal childcare, where a child is 13 or under
- 1-1 youth work and support groups may be able to continue

National Restrictions

Businesses and Venues

- Businesses and venues to close include:
 - All non-essential retail including, but not limited to clothing and electronics stores.
 - Indoor and outdoor leisure facilities such as bowling alleys, leisure centres, gyms and other sporting/activity facilities
 - Entertainment venues such as theatres, concert halls, cinemas and museums
 - Personal care facilities such as hair , beauty/nail salons, and tattoo parlours etc.
- Food shops, supermarkets and certain other retailers providing essential goods and services can remain open
- Hospitality venues can still provide takeaway and delivery services
- Hotels, hostels and other accommodation should only open for those who have to travel for work purposes and for other special exemptions
- Some venues will be allowed to stay open for specific exempt activities, like childcare and support groups

Financial support for businesses

- Continuation of the Coronavirus Job Retention Scheme during November – employers could be paid at least 80% of an employee's salary, up to £2500 a month
- Employers that need to close their businesses will now be asked to pay just National Insurance and Pensions contributions for their staff during the month of November
- Business premises forced to close in England due to local or national restrictions are to receive grants worth up to £3,000 as Local Restrictions Support Payments
- £1.1 billion is being given to local authorities, distributed on the basis of £20 per head, for one-off payments to enable councils to support businesses more broadly
- The Self-Employment Income Support Scheme is to be extended to April 2021

Covid-19 Three Tier Alert System

- Government to retain its Covid-19 Three Tier Alert System
- Tiers 1 and 2 funding is estimated at about £1 and £3 per capita respectively
- Tier 3 funding - LAs have received approx. £8 per capita for enforcement and £19-22 per capita for business help.
- Hertfordshire is currently in Tier 1

Covid-19 three tier alert system in England

Medium

Follow the rule of six if meeting indoors or outdoors
Pubs and restaurants to shut at 10pm

High

No household mixing indoors
Rule of six will apply outdoors

Very high

No household mixing indoors or outdoors
Pubs and bars not serving meals will be closed
Guidance against travelling in and out of the area
Rule of six applies to outdoor places like parks and beaches

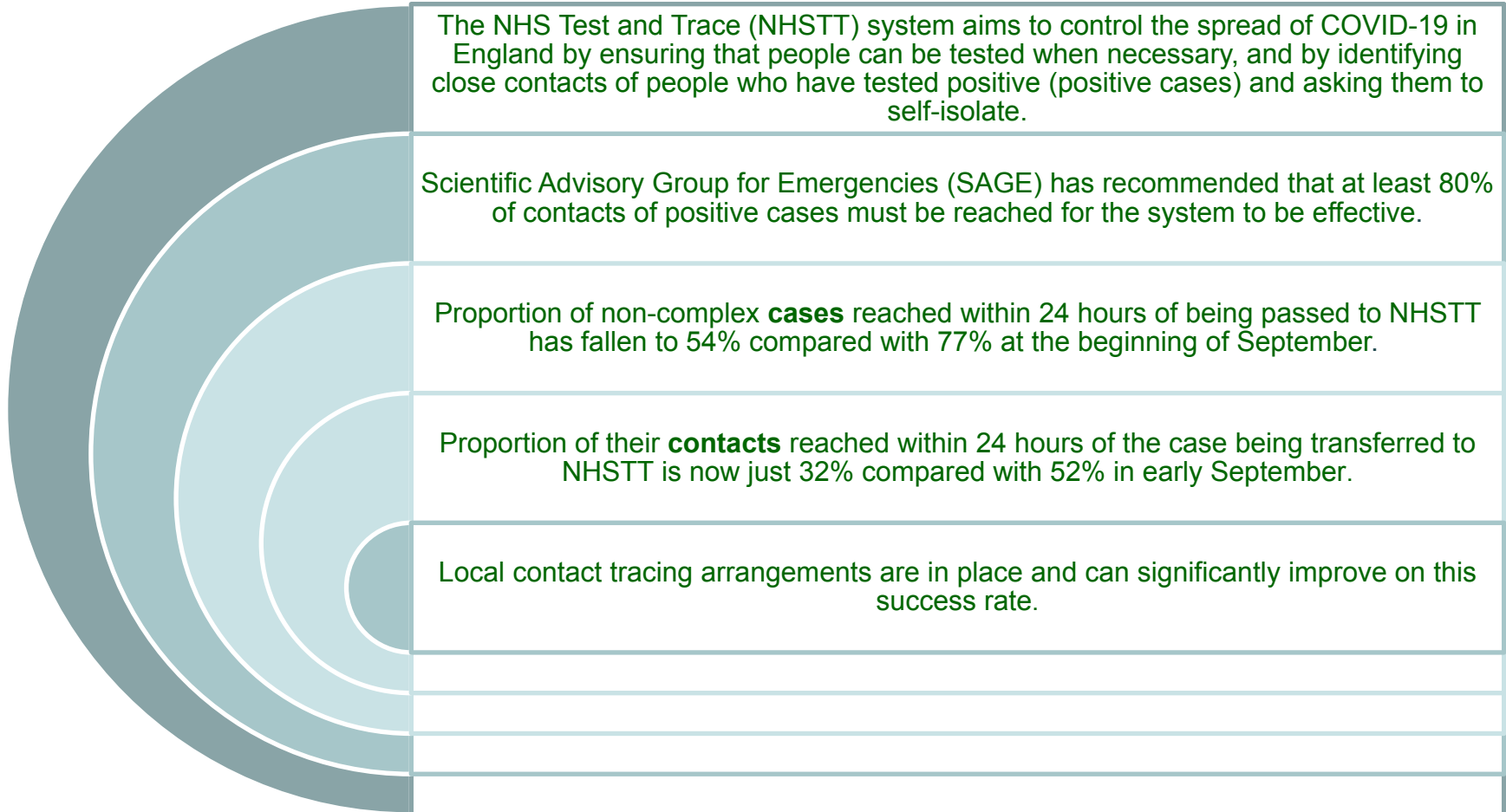
Clinically Extremely Vulnerable (CEV)

- Currently there are 2.2m people on the Shielded Patient List (SPL) nationally
- MHCLG to provide councils with funding equivalent to £14.60 per CEV individual on the SPL during the lockdown
- Hertfordshire County Council to receive £655,000 for 44,855 CEV individuals
- Funding to be used to set up and manage local systems, contacting CEV individuals, assessing their food and basic support needs and facilitating the delivery of that support where needed
- Direct provision of food is only expected to take place on an exceptional basis
- Letters will be issued to all CEV individuals – with a nationwide telephone number. National call centre will then redirect call/enquiries to HCC
- Community pharmacies will be receiving additional funding to support home deliveries
- Government expectation that volunteer support will be galvanised where it is available

Hertfordshire Resilience Forum Update

- Herts Health Protection Board is devising its future intervention strategy and identifying asks for Government support
- District/borough councils have been asked to look at generating capacity to support test, track, isolate and enforcement activity
- Herts VPAC are devising its future support offer for CEV individuals
- Herts Comms Cell is preparing a leaflet for all households on what you should, what you should not do and how you can get help
- Additional sites identified within Stevenage that could help support additional local testing and mass vaccination programmes
- Development of an enforcement framework to identify lead agencies and powers available to the Forum
- Acute trusts are very busy and are seeing an increase in admissions and deaths.

NHS Test and Trace



Stevenage Outbreak Management Plans

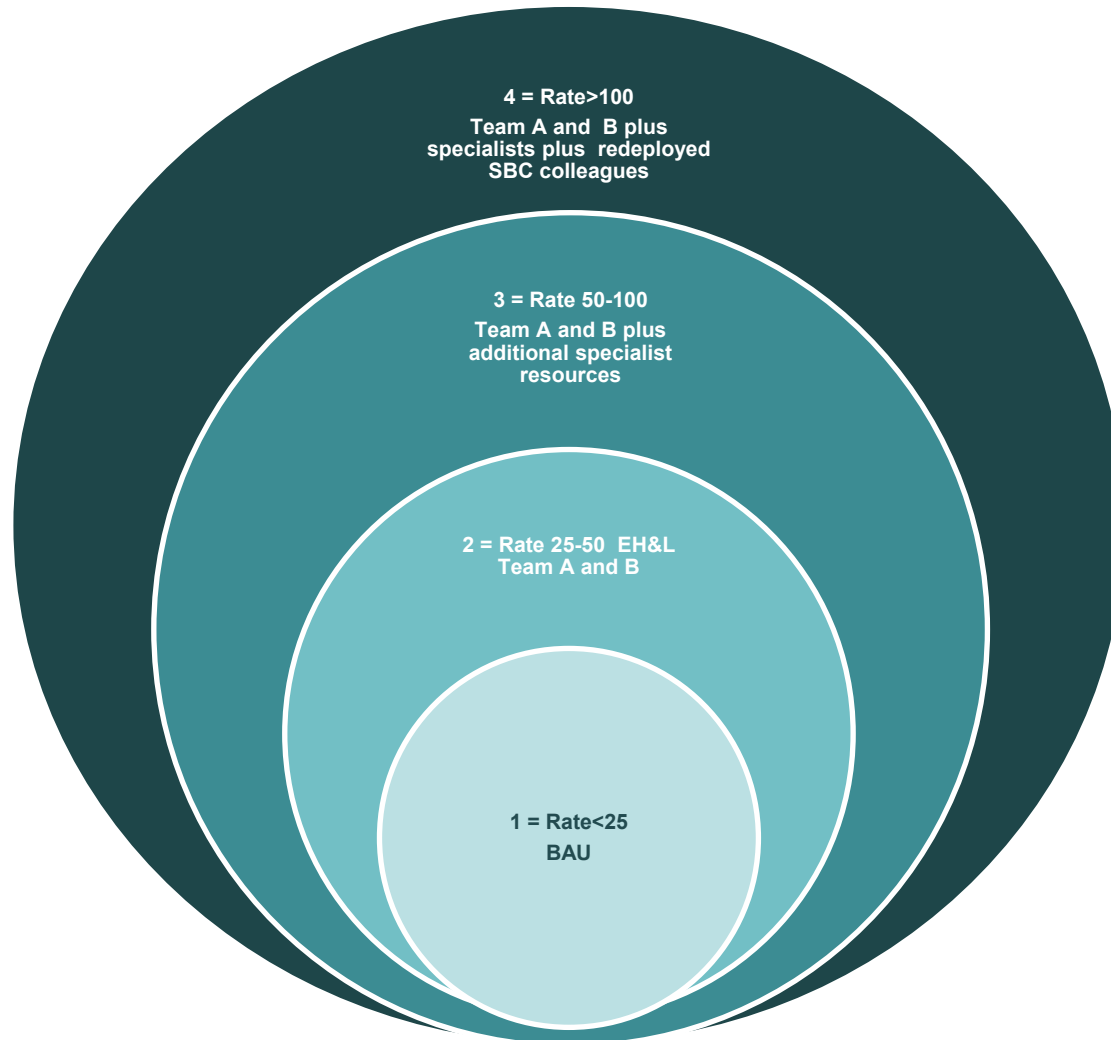
Our plans aim to provide :

- **A flexible framework** to allow for frequent changes of rules and guidance
- **Links** to contextual info and more detailed plans
- **Scalable** service management action plans
- **Outbreak response and notification** process
- **Escalation** and capacity arrangements
- **Incident management** arrangements (IMT/ LOC etc.)

Enforcement and Compliance

- Policing plans are in place to respond to any challenges that may arise prior to and during the lockdown
- Includes extra visibility and reassurance to monitor behaviour and compliance around Stevenage
- Patrol plan in place that will cover licensed premises, areas of high footfall and ASB hotspots
- Policing the 5th November Bonfire Night will be undertaken in line with previous years and with the added factor of Covid-19 compliance at private fireworks parties
- The number of enforcement notices issued by the Director of Public Health across Hertfordshire has trebled over the last few weeks
- SBC has received an allocation of £45k ring-fenced for COVID-19 compliance and enforcement.
- A Covid Marshalling Plan has been devised, however, prior to implementation it will be reviewed once new Government guidance is issued

Escalation: Outbreak response phases



SBC Adapting and prioritising services

Stevenage Helps - Connected with Hertfordshire wide offer, with a localised model of support locally for exceptional circumstances. Redeployment of staff.

Local Outbreak Management - Implementing capacity to support local trace and trace and the ability to scale this up within SBC teams, noting the need to then review impacts for other service provision

Support for businesses - Preparing for processing grants to closed business in accordance with legislation

Additional homelessness requirements - Potential for further rough sleepers to be accommodated and development of Housing First Business Case

Leisure Services - SLL reviewing the impact of closures on their business plan

Community Centres – supporting community associations to assess the impact of potential closures and to access grants where needed

Service closures

Leisure services

- Swimming
- Leisure centre
- Gordon Craig Theatre
- Golf centre
- Boating facilities
- Museum

Commercial

- Closure of Indoor Market non-essential retail – plan being developed

Community services

- Some community centres – discussions regarding sites with childcare or those with support groups
- Pavilions
- Bowls
- Play Services
- Community Transport

Essential services update

Service area	Operational status
Housing	Services operational, but some areas of pressure such as Independent Living, Homelessness
Customer Service Centre	Operational, appointment only for CSC
Environment services	Services operational – waste, trade waste, public toilets, parks, play areas, outdoor gyms. Bowls and pavilions to close
Market	Indoor Market to operate essential only services
Support services	Operational
Development, Regeneration	Operational
Planning and Regulation	Operational
Safeguarding, No More, ASB, SADA	Operational
Repairs, caretaking	Operational
Revs and Bens	Operational
Communities	A wide range of service suspensions and changes in effect

Support for communities

Leisure:

SLL have received £450k from the Culture Recovery Fund to help to offset losses forecasted from the ongoing closure of the Gordon Craig Theatre and cultural programme. Awaiting further guidance from MHCLG on £100million available to support local authority run leisure centres.

Stevenage Helps:

Stevenage Helps scaled up during half-term, working with the Play Service to provide lunches and activity packs for children across the town.

Advice Services Contract 2021-24:

Re-procurement of advice services contract underway to support effective advice and guidance to meet emerging community needs as part of town's recovery.

Housing update

Homelessness/Housing First and successful bid

- The Council is currently accommodating and supporting 144 households in temporary and emergency accommodation.
- The Council has secured revenue funding of £333k through the Government's Next Steps Programme. This bid covers:
 - Severe weather emergency provision for a potential 49 cases over a 15 week period,
 - Security and CCTV 24/7,
 - 2x support staff (Housing Supply, No More Service and Emerging Futures),
 - Funds for Private Rented Sector deposits, incentives and tenant training

Rent Arrears

- The Council saw a slight decrease in arrears over the past 3 weeks but this has increased again this week (still lower than 4 weeks ago).
- 3 additional posts are being recruited to that will help the income team to continue to support households who are experiencing financial difficulties and facing redundancies.

Council Finances

- Government has abandoned its long-term Comprehensive Spending review. The Chancellor will instead set out a one-year review in late November
- Financial analysis being undertaken to assess the impact of the new national restrictions in terms of additional costs and loss of income.
- Preparations in place to ensure HRA and General Fund budgets are set in the new year
- SBC has been allocated £391,055 in the latest (fourth) tranche of Government funding.
- Secured Next Steps Funding of £1,039M to support (principally) homelessness services for rough sleepers and those facing homelessness.
- £100 million to support council leisure centres. Further bidding details will be set out shortly by the DCMS.

Business continuity

- Undertake daily service impact analysis to ensure service continuity
- Enacting redeployment plans where required, to support contact tracing, Stevenage Helps and front line services
- Review Covid-19 risk assessments to ensure vulnerable employees protected and supported
- Welfare support package in place, using a co-operative approach with Mind in Mid Herts
- Establishing a Mental Health Action Group to identify additional support measures that can be put in place to help ensure the welfare and resilience of managers and employees
- ICT kit rollout programme
- Assessing medium-term priorities and Forward Plan

Communications update

- Lockdown Communications Plan being devised. To include:
 - Covid-19 insert publication to be circulated alongside the Autumn edition of the Chronicle
 - Comet article
- #StaySafeStevenage Campaign: Using SBC bin lorries as a comms channel to advertise this message
- Digital screens/boards: In progress following Director of Public Health support and approval
- Members and Wardens distributing masks to local people
- Frequently Asked Questions are being updated on the Council's website



Stevenage Recovery

STEVENAGE
TOGETHER

- Executive approved SBC Recovery Plan
- Stevenage Together Partnership working on a joint recovery action plan for the town, covering areas from health, to jobs and skills, environment, regeneration and support to those who need it the most
- Bringing forward Town Investment Plan seeking toward £50m to help promote job opportunities, regeneration, skills development and green recovery
- Seeking to progress SG1 regeneration project